

WAAS  
CH **97637**  
**W27A**

APP CRS  
**268°**

Rwy Ldg  
TDZE **912**  
Apt Elev **916**

**RNAV (GPS) RWY 27**

OCEANA COUNTY (C04)

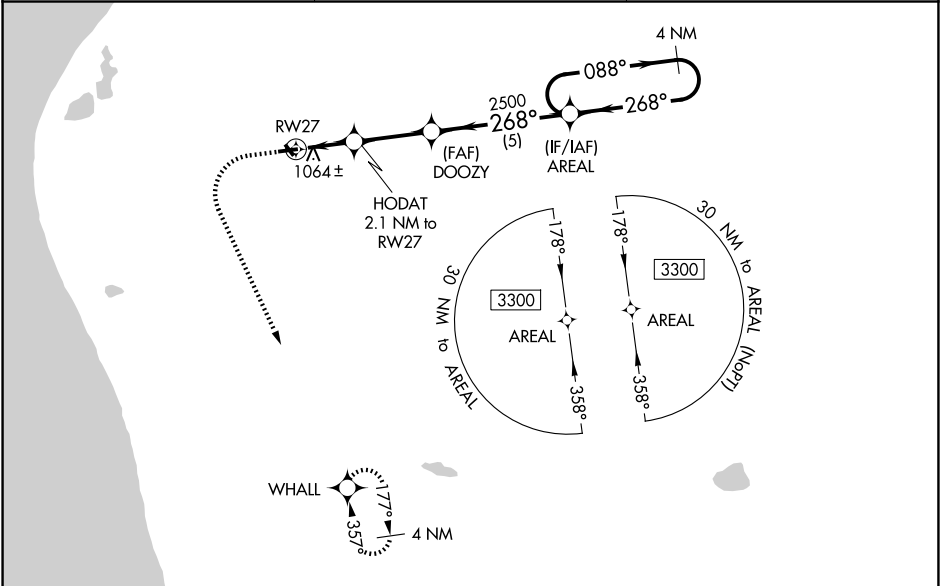
▼

▲ NA

Baro-VNAV NA when using Fremont altimeter setting. For uncompensated Baro-VNAV systems, LNAV/VNAV NA below -16°C (4°F) or above 54°C (130°F). When local altimeter setting not received, use Fremont altimeter setting and increase all DA 64 feet, all MDA 80 feet, and LPV and LNAV/VNAV visibility all Cats ¼ mile. DME/DME RNP-0.3 NA. Procedure NA at night. Helicopter visibility reduction below 1 SM NA. Circling NA to Rwys 15 and 33.

MISSED APPROACH:  
Climb to 1500 then climbing left turn to 3300 direct WHALL and hold.

|                         |   |                                 |
|-------------------------|---|---------------------------------|
| AWOS-AV<br><b>122.7</b> | GREAT LAKES APP CON*<br><b>119.8 290.35</b> | UNICOM<br><b>122.7 (CTAF) 0</b> |
|-------------------------|---|---------------------------------|



ELEV 916

TDZE 912

1500

3300

WHALL

VGSI angle and RNAV glidepath not coincident (VGSI Angle 4.00/TCH 25).

\*LNAV only

RWY 27

HODAT 2.1 NM to RWY 27

DOOZY 2500

AREAL 3300

2.1 NM

2.8 NM

5 NM

| CATEGORY     | A                     | B                             | C | D  |
|--------------|-----------------------|-------------------------------|---|----|
| LPV DA       | 1254-1 1/8            | 342 (400-1 1/8)               |   | NA |
| LNAV/VNAV DA | 1236-1 1/8            | 324 (400-1 1/8)               |   | NA |
| LNAV MDA     | 1340-1                | 428 (500-1)                   |   | NA |
| CIRCLING     | 1540-1<br>624 (700-1) | 1780-1 1/4<br>864 (900-1 1/4) |   | NA |