

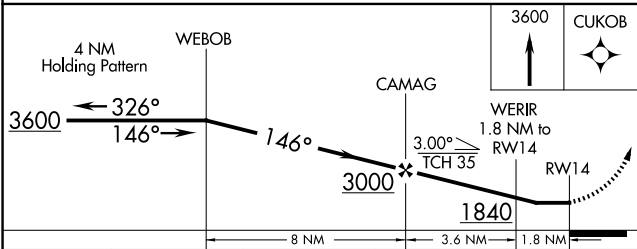
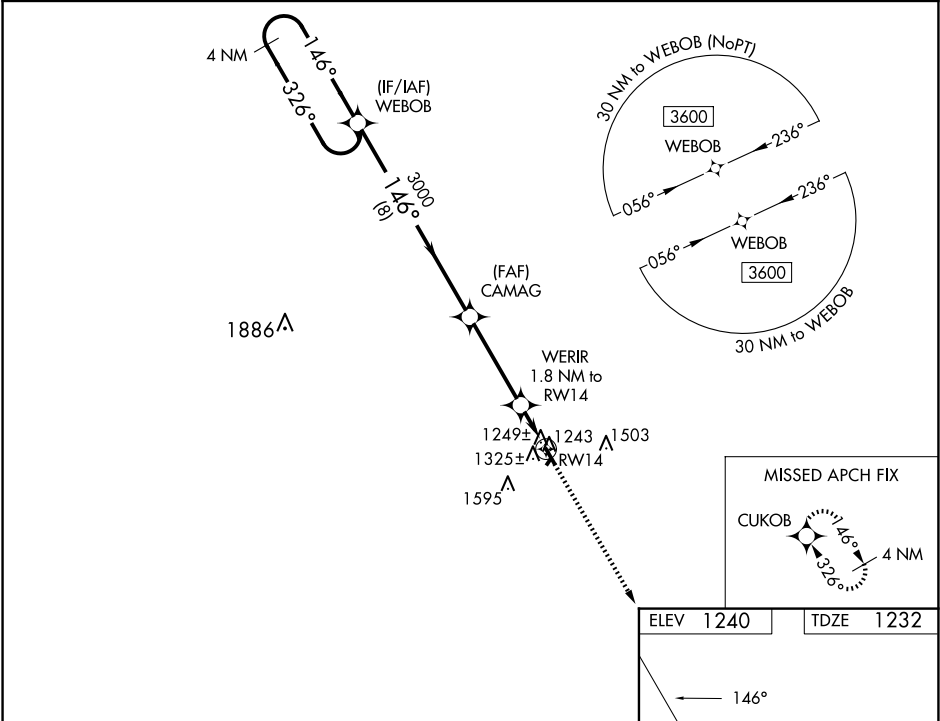
| | | |
|--|------------------------|---|
| WAAS CH 70739 W14A | APP CRS 146° | Rwy Idg 3397 TDZE 1232 Apt Elev 1240 |
|--|------------------------|---|

RNAV (GPS) RWY 14

LISBON MUNI (6L3)

| | |
|-----------------|---|
| RNP APCH - GPS. | MISSED APPROACH: Climb to 3600 direct CUKOB and hold. |
| ▼ ▲ NA | Circling NA to Rwys 3 and 21. Rwy 14 helicopter visibility reduction below 1 SM NA. Use Gwinner altimeter setting; when not received, use Valley City altimeter setting and increase all MDAs 80 feet. Straight-In Rwy 14 NA at night. Circling Rwy 14 NA at night. |

| | | |
|------------------------------|---|------------------------|
| GWR AWOS-3 118.325 | MINNEAPOLIS CENTER 127.35 278.3 | CTAF 122.9 0 |
|------------------------------|---|------------------------|



| CATEGORY | A | B | C | D |
|----------|-----------------------|-----------------------|----|----|
| LP MDA | 1580-1 | 348 (400-1) | NA | NA |
| LNAV MDA | 1620-1 | 388 (400-1) | NA | NA |
| CIRCLING | 1740-1 500 (500-1) | 1940-1 700 (700-1) | NA | NA |

