

|  |                        |                             |   |
|--|------------------------|-----------------------------|---|
| WAAS<br>CH <b>63036</b><br><b>W12A</b> | APP CRS<br><b>123°</b> | Rwy Idg<br>TDZE<br>Apt Elev | <b>3402</b><br><b>2677</b><br><b>2677</b> |
|--|------------------------|-----------------------------|---|

APP CR  
123°

|          |             |
|----------|-------------|
| Rwy Idg  | <b>3402</b> |
| TDZE     | <b>2677</b> |
| Apt Elev | <b>2677</b> |

## RNAV (GPS) RWY 12

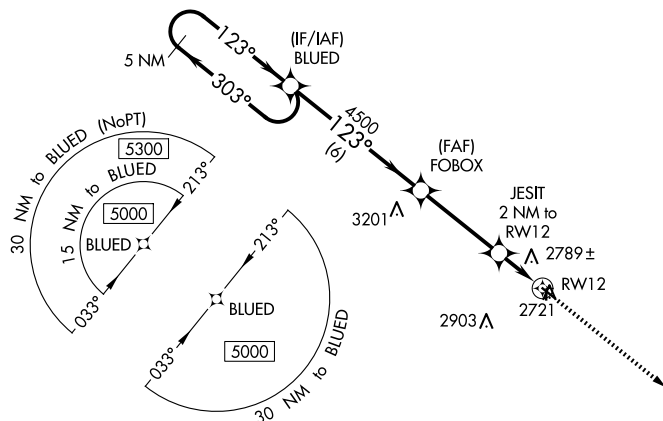
CURTIS MUNI (47V)



**A NA**

Baro-VNAV NA. Use Mc Cook altimeter setting; when not received, use North Platte altimeter setting and increase all DA 10 feet and all MDA 20 feet, and increase LNAV/VNAV Cat A and B visibility to 1 1/4 mile. DME/DME RNP-0.3 NA. Helicopter visibility reduction below 3/4 SM NA. Night landing: Rwy's 17, 35 NA.

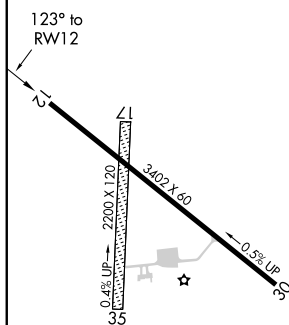
**MISSED APPROACH:** Climb to 5000 direct HASEK and hold.

MCK ASOS  
119.025DENVER CENTER  
132.7 226.675CTAF  
122.9 L

ELEV 2677

TDZE 2677

3819



5 NM  
Holding Pattern

5000.

GP 3.00°  
TCH 40

BLUED

FOBOX

2 NM to


|  |    |
|--|----|
|  | 50 |
|--|----|

HASEK

\* LNAV only

RW12

6 nm 3.6 nm 2 nm

| CATEGORY   |     | A                     | B                     | C | D  |
|--|-----|-----------------------|-----------------------|---|----|
| LPV  | DA  | 3002-1½               | 325 (400-1½)          |   | NA |
| LNAV/<br>VNAV  | DA  | 3026-1½               | 349 (400-1½)          |   | NA |
| LNAV   | MDA | 3120-1                | 443 (500-1)           |   | NA |
|  CIRCLING |     | 3200-1<br>523 (600-1) | 3380-1<br>703 (800-1) |   | NA |

MIRL Rwy 12-30 **L**

CURTIS, NEBRASKA

Orig 30APR15

CURTIS MUNI (47V)

40°38'N-100°28'W

## RNAV (GPS) RWY 12