

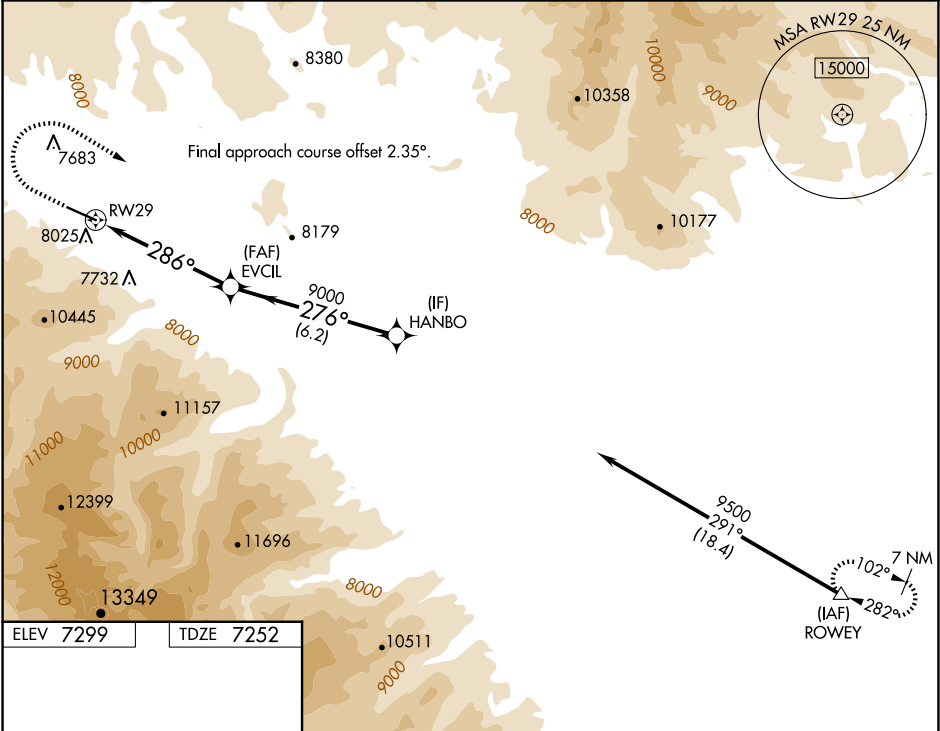
WAAS CH 70447 W29A	APP CRS 286°	Rwy Idg TDZE 7252 Apt Elev 7299
--	------------------------	---

RNAV (GPS) RWY 29

DUBOIS MUNI (DUB)

RNP APCH - GPS.	MISSED APPROACH: Climb to 8300 then climbing right turn to 11500 direct ROWEY and hold. *Missed approach requires minimum climb of 300 feet per NM to 9100.
⚠ When local altimeter setting not received, procedure NA. Rwy 29 helicopter visibility reduction below ¾ SM NA. Procedure NA at night. Circling NA south of Rwy 11-29.	

AWOS-3PT 118.275	SALT LAKE CENTER 133.25 285.6	CTAF 122.9 0
----------------------------	---	------------------------



8300	11500	ROWEY
↑	↷	△

Diagram illustrating the missed approach procedure for RWY 29:

- Initial climb: 4.4 NM to RWY 29, 286°.
- Turn: 276°.
- Final climb: 6.2 NM to HANBO, 9000.
- GP 3.00° TCH 43.

CATEGORY	A	B	C	D	
LPV	DA*	8020-2½ 768 (800-2½)			NA
LNAV	MDA	8700-1¼ 1448 (1500-1¼)	8700-1½ 1448 (1500-1½)	8700-3 1448 (1500-3)	NA
CIRCLING		8700-1¼ 1401 (1500-1¼)	8700-1½ 1401 (1500-1½)	8800-3 1501 (1600-3)	NA