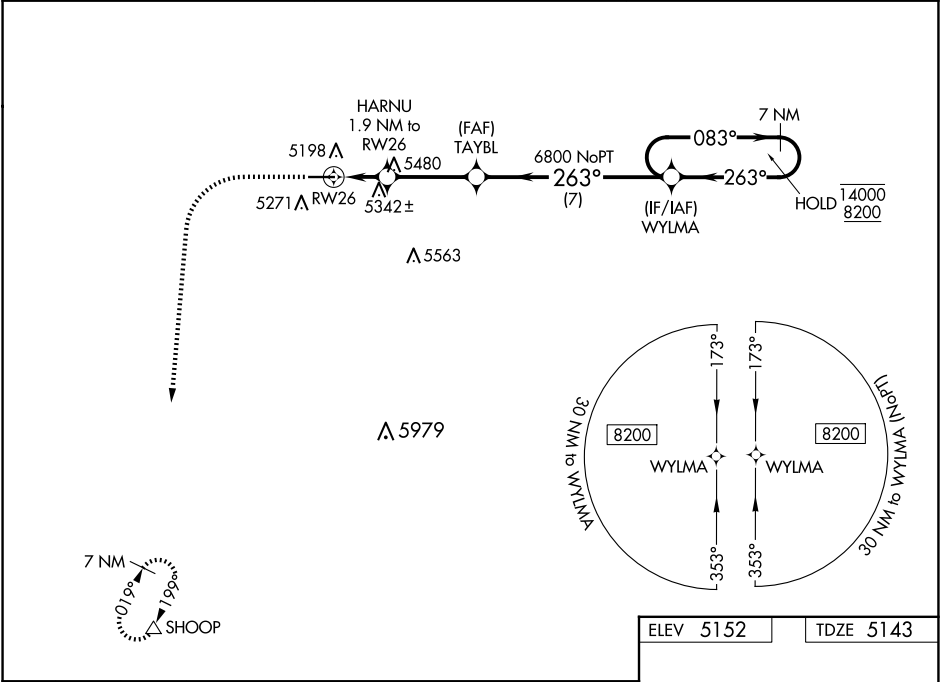


WAAS CH 58147 W26A	APP CRS 263°	Rwy Ldg TDZE 5143 Apt Elev 5152
--	------------------------	---

RNAV (GPS) RWY 26
PINE BLUFFS MUNI (82V)

RNP APCH - GPS. ▼ For uncompensated Baro-VNAV systems, LNAV/VNAV NA below -22°C or above 54°C. Rwy 26 helicopter visibility reduction below 1 SM NA. Procedure NA at night. ▲	MISSED APPROACH: Climb to 5600 then climbing left turn to 8500 direct SHOOP and hold.
---	---

AWOS-3PT 132.425	DENVER CENTER 125.9 284.7	UNICOM 122.8 (CTAF) 0
----------------------------	-------------------------------------	---------------------------------



5600

8500

SHOOP

↑

↖

△

VGSI and RNAV glidepath not coincident (VGSI Angle 3.00/TCH 25).

WYLMMA

7 NM Holding Pattern

8083°

←263°

14000

8200

GP 3.00° TCH 40

TAYBL

6800

263°

6800

HARNU

1.9 NM to RW26

5780

1.9 NM

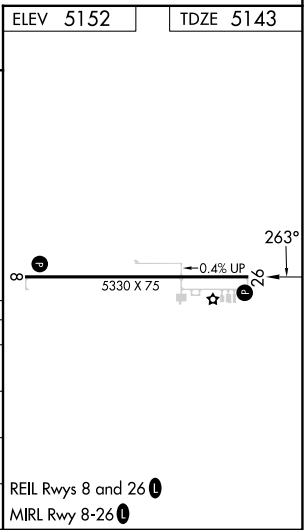
3.2 NM

7 NM

RW26

↖

CATEGORY	A	B	C	D
LPV DA	5393-1 250 (300-1)			NA
LNAV/VNAV DA	5393-1 250 (300-1)			NA
LNAV MDA	5600-1 457 (500-1)	5600-1 ¹³ / ₈ 457 (500-1 ³ / ₈)		NA
CIRCLING	5620-1 468 (500-1)	5680-1 528 (600-1)	5780-1 ³ / ₄ 628 (700-1 ³ / ₄)	NA



NW-1, 07 AUG 2025 to 04 SEP 2025

NW-1, 07 AUG 2025 to 04 SEP 2025