

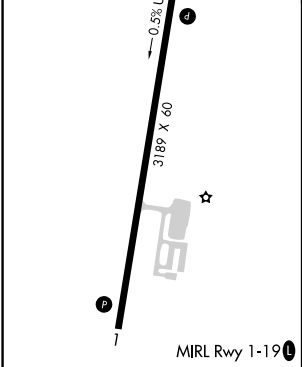
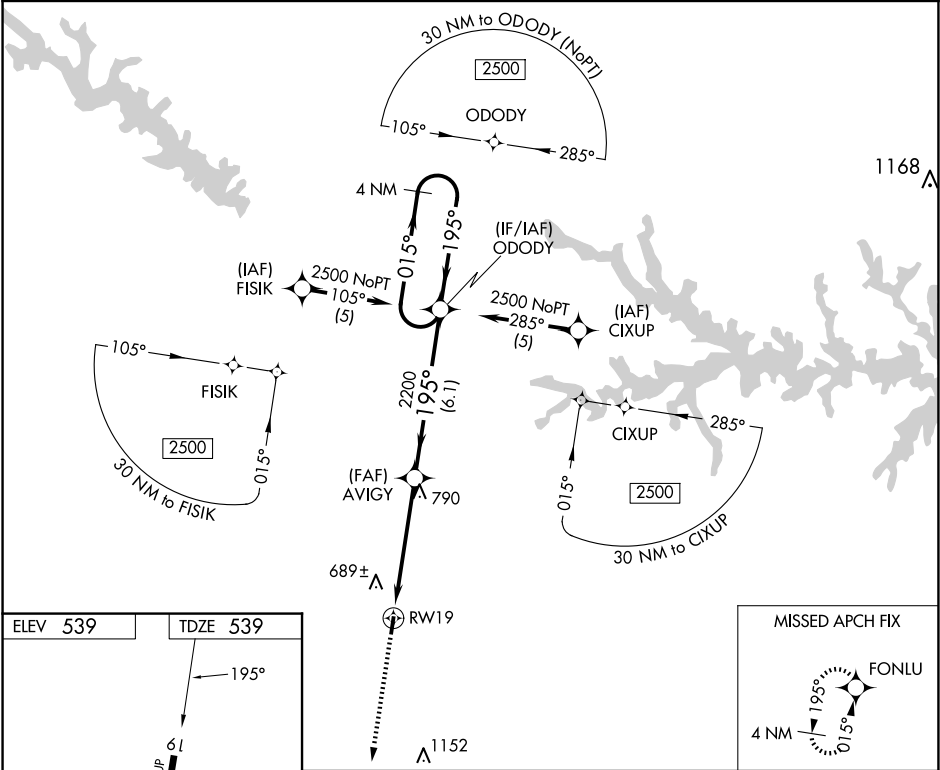
APP CRS	Rwy Ldg	3189
195°	TDZE	539
	Apt Elev	539

RNAV (GPS) RWY 19

SALUDA COUNTY (6J4)

<div><div>▼</div><div>▲ NA</div></div> <div>DME/DME RNP-0.3 NA. Procedure NA at night. Visibility reduction by helicopters NA. Use Aiken altimeter setting, when not received, use Augusta Rgnl altimeter setting and increase all MDAs 100 feet, increase LNAV Cat C visibility ¼ SM and Circling Cat C visibility ½ SM.</div>	MISSED APPROACH: Climb to 2500 direct FONLU and hold.
---	---

AIK AWOS-3PT 118.025	AUGUSTA APP CON ★ 119.15	CTAF 122.9
-------------------------	-----------------------------	---------------



MISSED APCH FIX			
VGSi and descent angles not coincident.			
4 NM Holding Pattern			
ODODY			
AVIGY			
RW19			
3.03° TCH 52			
2200			
5.1 NM 6.1 NM			
CATEGORY	A	B	C
LNAV MDA	1060-1	521 (600-1)	1060-1½
			521 (600-1½)
CIRCLING	1100-1	1160-1	1180-1¾
	561 (600-1)	621 (700-1)	641 (700-1¾)
			NA