

APP CRS

Rwy Ldg

015°

3189

TDZE

539

Apt Elev

539

RNAV (GPS) RWY 1

SALUDA COUNTY (6J4)

RNP APCH.

T

NA

Procedure NA at night. Rwy 1 helicopter visibility reduction below 1 SM NA. Use Aiken altimeter setting; when not received, use Augusta Rgnl at Bush Fld altimeter setting and increase all MDA 100 feet and increase LNAV Cat C visibility ¼ SM.

MISSED APPROACH:

Climbing left turn to 2500 direct FONLU and hold.

AIK AWOS-3PT

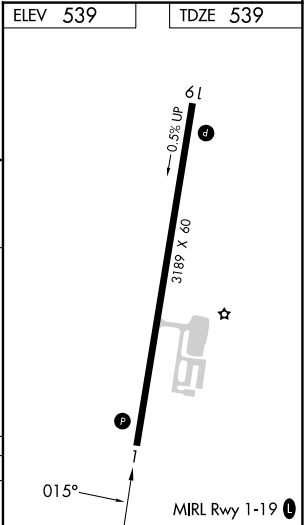
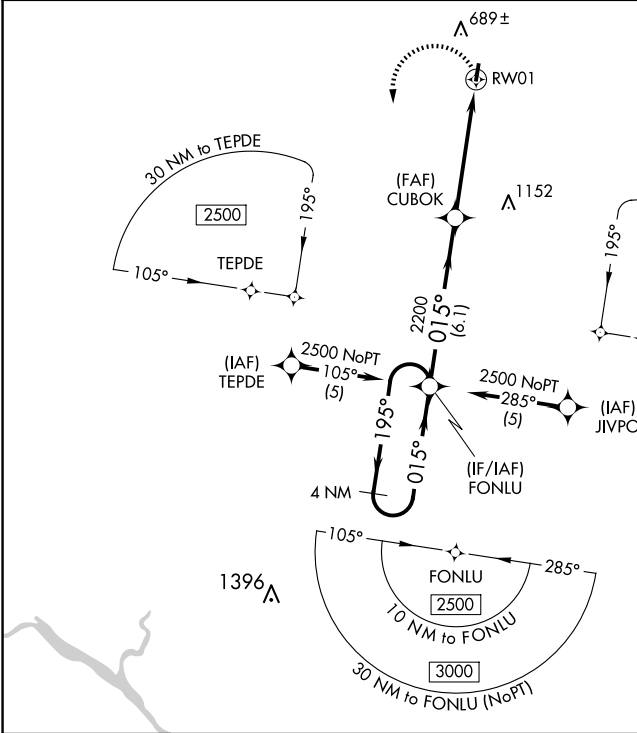
118.025

AUGUSTA APP CON ★

119.15

CTAF

122.9



VGSI and descent angles not coincident (VGSI Angle 3.00/TCH 32).				
4 NM Holding Pattern FONLU				
2500 ← 195° → 015° → 015° → CUBOK				
2200 * 3.04° TCH 45 RWY 1				
6.1 NM 5 NM				
CATEGORY	A	B	C	D
LNAV MDA	1160-1	621 (700-1)	1160-1¾ 621 (700-1¾)	NA