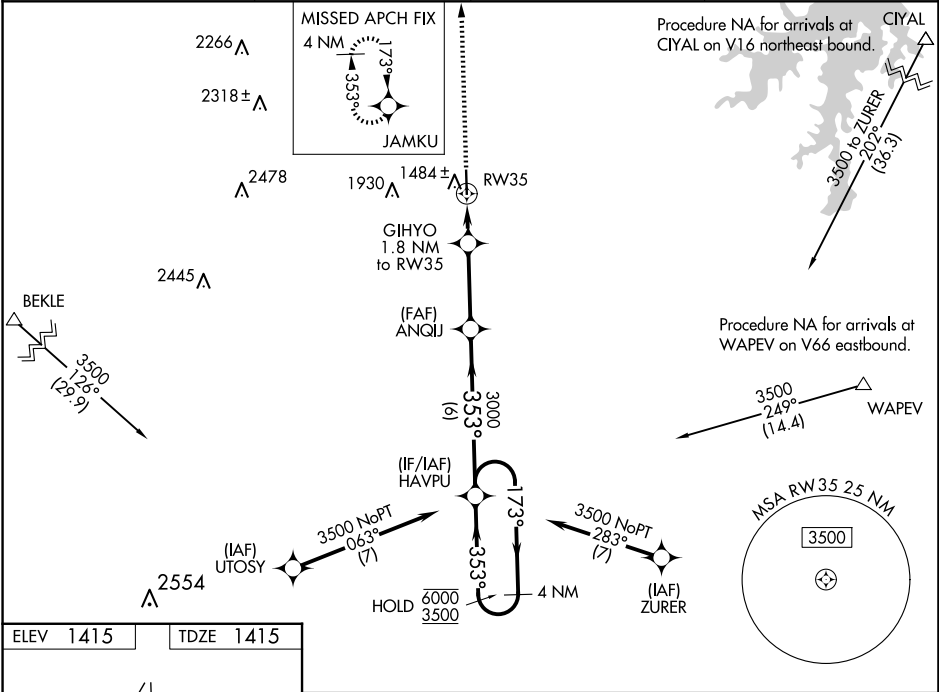


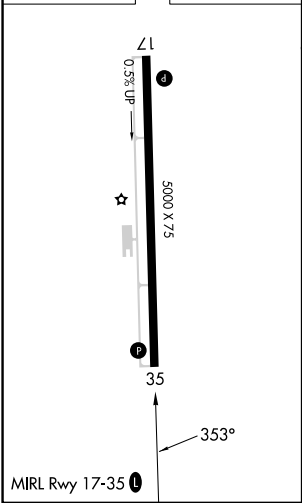
| | | |
|--|------------------------|---|
| WAAS CH 65935 W35A | APP CRS 353° | Rwy Idg 5000 TDZE 1415 Apt Elev 1415 |
|--|------------------------|---|

RNAV (GPS) RWY 35
ALBANY MUNI (T23)

| | | | |
|---|-----------------------|--------------------------------|---|
| RNP APCH. | | | MISSED APPROACH: Climb to 3500 direct JAMKU and hold. |
| Rwy 35 helicopter visibility reduction below ¾ SM NA. Baro-VNAV NA. Use Breckenridge altimeter setting. | | | |
| NA | BKD AWOS-3 120.175 | ABILENE APP CON 125.0 338.3 | CTAF 122.9 |
| | | | 123.5 0 |



| | |
|------------------|------------------|
| ELEV 1415 | TDZE 1415 |
|------------------|------------------|



3500

↑

JAMKU

✦

*LNAV only.

GIHYO

1.8 NM to RW35

RW35

ANQIJ

3000

HAVPU

4 NM Holding Pattern

173° → 6000

← 353° 3500

GP 3.00° TCH 40

1.8 NM 3.1 NM 6 NM

| CATEGORY | A | B | C | D |
|--------------|--------------------|-------------|---|----|
| LPV DA | 1728-1 313 (400-1) | | | NA |
| LNAV/VNAV DA | 1728-1 313 (400-1) | | | NA |
| LNAV MDA | 1800-1 | 385 (400-1) | 1800-1 ¹ / ₈ 385 (400-1 ¹ / ₈) | NA |
| CIRCLING | 2000-1 | 585 (600-1) | 2360-2 ³ / ₄ 945 (1000-2 ³ / ₄) | NA |