



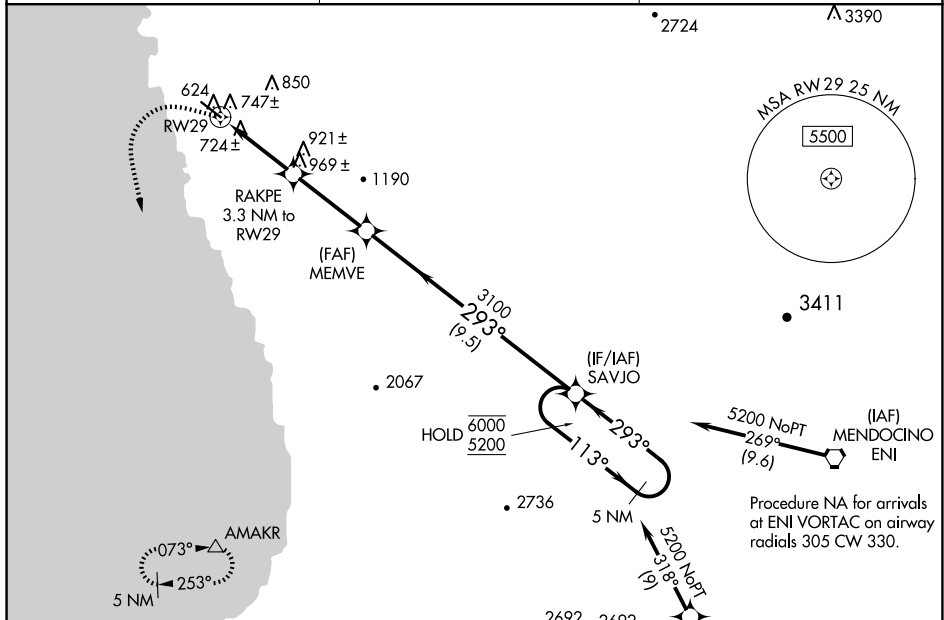
25163

RNAV (GPS) RWY 29
LITTLE RIVER (LLR)

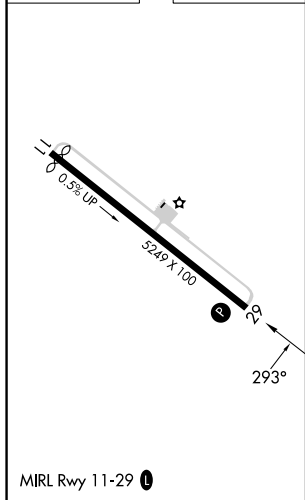
	Circling NA northeast of Rwy 11-29.
	Procedure NA at night.
	Rwy 29 helicopter visibility reduction below 1 SM NA.

MISSED APPROACH: Climbing left turn to 6000 direct AMAKR and hold, continue climb-in-hold to 6000.

AWOS-3 121.125	OAKLAND CENTER 132.2 350.3	AUNICOM 122.7 (CTAF) 0
--------------------------	--------------------------------------	---



ELEV 574		TDZE 574
----------	--	----------



		VGSJ and descent angles not coincident (VGSJ Angle 3.50/TCH 42).		5 NM Holding Pattern	
		RAKPE 3.3 NM to RW29 3.50° TCH 55		SAVJO 113° → 6000 ← 293° 5200	
RW29 3.3 NM		MEMVE 3.3 NM		9.5 NM	
CATEGORY	A	B	C	D	
LP MDA	980-1	406 (500-1)	980-1 $\frac{1}{8}$	406 (500-1 $\frac{1}{8}$)	
RNAV MDA	1000-1	426 (500-1)	1000-1 $\frac{1}{4}$	426 (500-1 $\frac{1}{4}$)	
CIRCLING	1040-1	466 (500-1)	1080-1 $\frac{1}{2}$ 506 (600-1 $\frac{1}{2}$)	1400-2 $\frac{3}{4}$ 826 (900-2 $\frac{3}{4}$)	

LITTLE RIVER (LLR)
RNAV (GPS) RWY 29

SW-2, 07 AUG 2025 to 04 SEP 2025