

WAAS CH <b>42824</b> <b>W05A</b>	APP CRS <b>045°</b>	Rwy Ldg TDZE Apt Elev	<b>5002</b> <b>411</b> <b>412</b>
--	------------------------	-----------------------------	---

RNAV (GPS) RWY 5

HANCOCK COUNTY/RON LEWIS FLD (KY8)

RNP APCH.

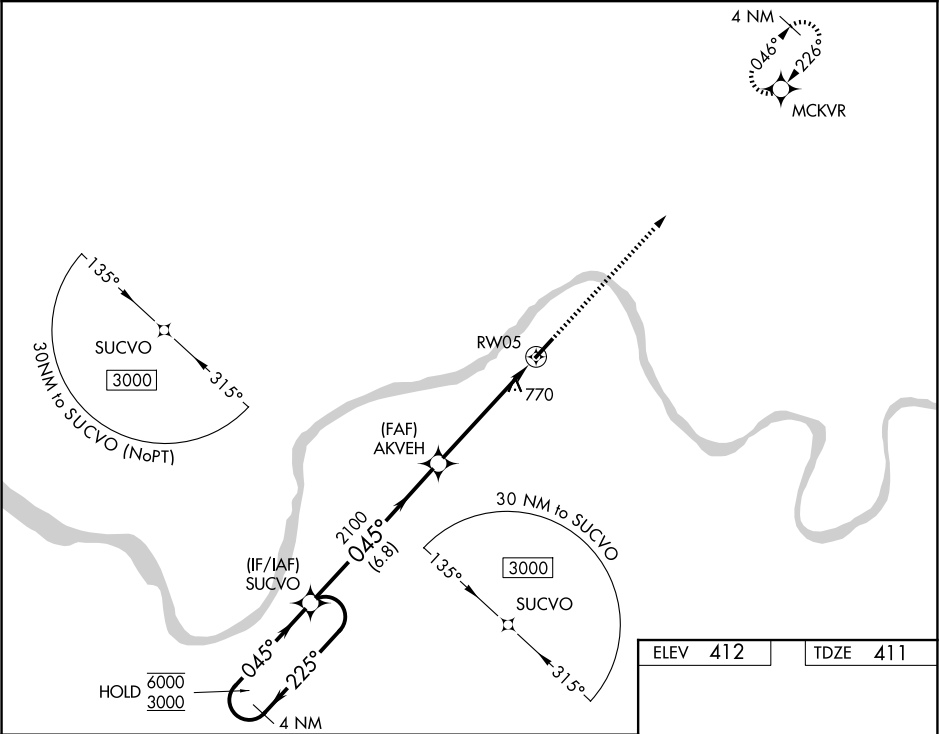
▼

NA

Rwy 5 helicopter visibility reduction below ¼ SM NA. When local altimeter setting not received, use Owensboro altimeter setting and increase all MDAs 60 feet; increase LP and LNAV Cat C visibility ⅛ SM and Circling Cat C visibility ¼ SM.

MISSED APPROACH:  
Climb to 3000 direct MCKVR and hold.

AWOS-3 <b>119.775</b>	EVANSVILLE APP CON ★ <b>124.025 290.9</b>	UNICOM <b>123.0 (CTAF) 0</b>
--------------------------	--	---------------------------------



4 NM

Holding Pattern

Visual Segment - Obstacles.

3000

↑

MCKVR

✧

6000

3000

←225°

045°→

SUCVO

AKVEH

RW05

045°

2100

6.8 NM

5.2 NM

CATEGORY	A	B	C	D
LP MDA	1020-1	609 (700-1)	1020-1¾ 609 (700-1¾)	NA
LNAV MDA	1020-1	609 (700-1)	1020-1¾ 609 (700-1¾)	NA
CIRCLING	1020-1 608 (700-1)	1080-1 668 (700-1)	1080-1¾ 668 (700-1¾)	NA

5002 X75

045°

MIRL Rwy 5-23

REIL Rwy 5 and 23