

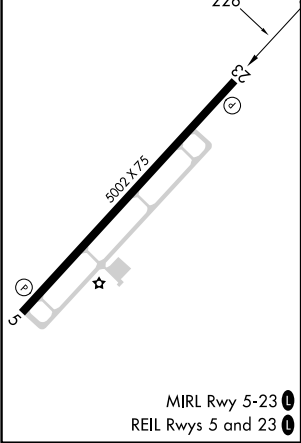
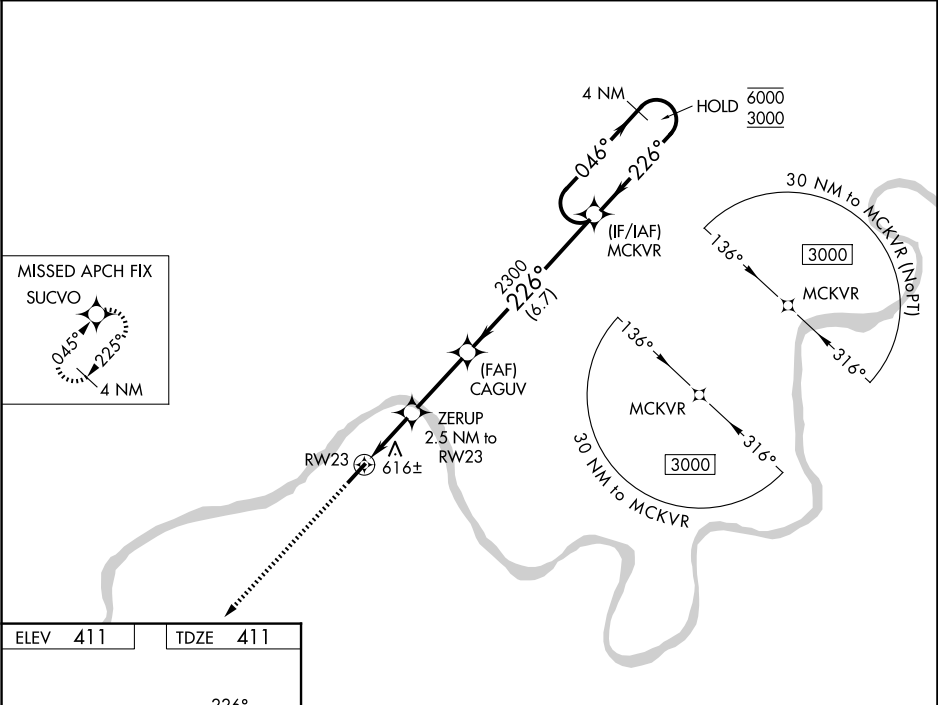
WAAS CH <b>61324</b> <b>W23A</b>	APP CRS <b>226°</b>	Rwy Ldg TDZE Apt Elev	<b>5002</b> <b>411</b> <b>411</b>
--	------------------------	-----------------------------	---

RNAV (GPS) RWY 23

HANCOCK COUNTY/RON LEWIS FLD (KY8)

RNP APCH - GPS.	MISSED APPROACH: Climb to 3000 direct SUCVO and hold.
<div><div>T</div><div>Rwy 23 helicopter visibility reduction below ¾ SM NA. For uncompensated Baro-VNAV systems, LNAV/VNAV NA below -15°C or above 54°C.</div></div>	

AWOS-3 <b>119.775</b>	EVANSVILLE APP CON ★ <b>124.025 290.9</b>	UNICOM <b>123.0 (CTAF) 0</b>
--------------------------	--	---------------------------------



ELEV 411 TDZE 411		3000 SUCVO		VGSI and RNAV glidepath not coincident (VGSI Angle 3.00/TCH 45).		4 NM Holding Pattern	
226°		3000		CAGUV		MCKVR	
RW23		1.3 NM to RW18		2.5 NM to RW23		2300	
1260		226°		2300		046° 6000	
1.3 NM		1.2 NM		2.9 NM		6.7 NM	
CATEGORY		A		B		C	
LPV DA		834-1¼		423 (500-1¼)		NA	
LNAV/VNAV DA		880-1⅔		469 (500-1⅔)		NA	
LNAV MDA		880-1		469 (500-1)		880-1⅔ 469 (500-1⅔)	
CIRCLING		960-1 549 (600-1)		1080-1 669 (700-1)		1160-2¼ 749 (800-2¼)	
MIRL Rwy 5-23 0		REIL Rwy 5 and 23 0					