

WAAS CH 62928 W28A	APP CRS 280°	Rwy Ldg 4549 TDZE 928 Apt Elev 928
--	------------------------	---

RNAV (GPS) RWY 28

BOGGS FLD (USW)

RNP APCH.

▼

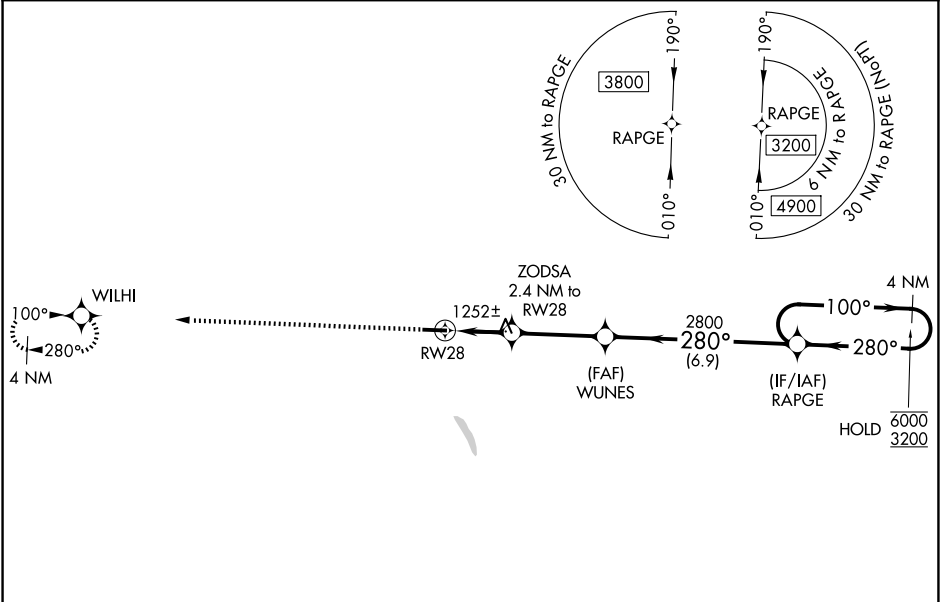
▲

NA

Rwy 28 helicopter visibility reduction below 1 SM NA. Rwy 28 Straight-in and Circling minimums NA at night. When local altimeter setting not received, use Charleston altimeter setting and increase all MDA's 80 feet, LP and LNAV Cats C and D visibility ⅓ SM and Circling Cats C and D visibility ¼ SM. *1780 when using Charleston altimeter setting.

MISSED APPROACH:
Climb to 3500 direct
WILHI and hold.

AWOS-3 118.575	CHARLESTON APP CON 124.1 269.125	UNICOM 122.725 (CTAF) 0
--------------------------	--	-----------------------------------



ELEV 928

TDZE 928

10

280°

28

4549 X 75

3500

WILHI

Visual Segment - Obstacles.

WUNES

ZODSA
2.4 NM to
RW28

RW28

1720*

2800

2.4 NM

3.4 NM

6.9 NM

RAPGE

4 NM
Holding Pattern

100°

280°

6000

3200

CATEGORY	A	B	C	D
LP MDA	1520-1	592 (600-1)	1520-1¾	592 (600-1¾)
LNAV MDA	1520-1	592 (600-1)	1520-1¾	592 (600-1¾)
CIRCLING	1560-1 632 (700-1)	1760-1¼ 832 (900-1¼)	1760-2½ 832 (900-2½)	1760-2¾ 832 (900-2¾)

NE-4, 07 AUG 2025 to 04 SEP 2025

NE-4, 07 AUG 2025 to 04 SEP 2025