

WAAS CH <b>93632</b> <b>W10A</b>	APP CRS <b>100°</b>	Rwy Ldg TDZE <b>928</b> Apt Elev <b>928</b>
--	------------------------	---

RNAV (GPS) RWY 10

BOGGS FLD (USW)

RNP APCH.

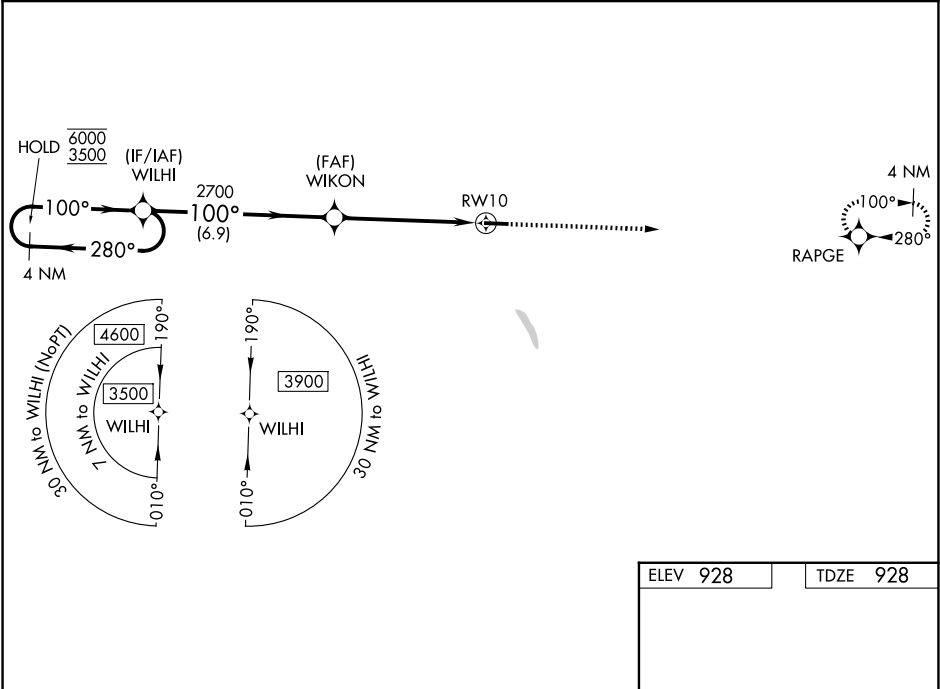
▼

▲ NA

Circling Rwy 28 NA at night. Baro-VNAV and VDP NA when using Charleston altimeter setting. Rwy 10 helicopter visibility reduction below ¾ SM NA. For uncompensated Baro-VNAV systems, LNAV/VNAV NA below -16°C or above 54°C. When local altimeter setting not received, use Charleston altimeter setting, increase LPV DA to 1247 feet, LNAV/VNAV DA to 1730 feet, and LNAV/VNAV visibility all Cats by ½ SM; increase all MDAs 80 feet and LNAV visibility Cat B ¼ SM and Cat C and D ½ SM, and Circling visibility Cats C and D by ¼ SM.

MISSED APPROACH:  
Climb to 3200 direct  
RAPGE and hold.

AWOS-3 <b>118.575</b>	CHARLESTON APP CON <b>124.1 269.125</b>	UNICOM <b>122.725 (CTAF) 0</b>
--------------------------	--	-----------------------------------



ELEV 928	TDZE 928
----------	----------

4 NM  
Holding Pattern

WILHI

WIKON

3200

RAPGE

6000  
3500

280°

100°

100°

2700

2700

3.4 NM

2 NM

GP 3.00°  
TCH 40

\* 2 NM to  
RWY10

\* LNAV only.

4549 X 75

28

CATEGORY	A	B	C	D
LPV DA	1178-1 250 (300-1)			
LNAV/VNAV DA	1661-2 733 (800-2)			
LNAV MDA	1620-1	692 (700-1)	1620-2	692 (700-2)
CIRCLING	1620-1 692 (700-1)	1760-1¼ 832 (900-1¼)	1760-2½ 832 (900-2½)	1760-2¾ 832 (900-2¾)

MIRL Rwy 10-28 0