

LOUP CITY, NEBRASKA


AL-10385 (FAA)

19339

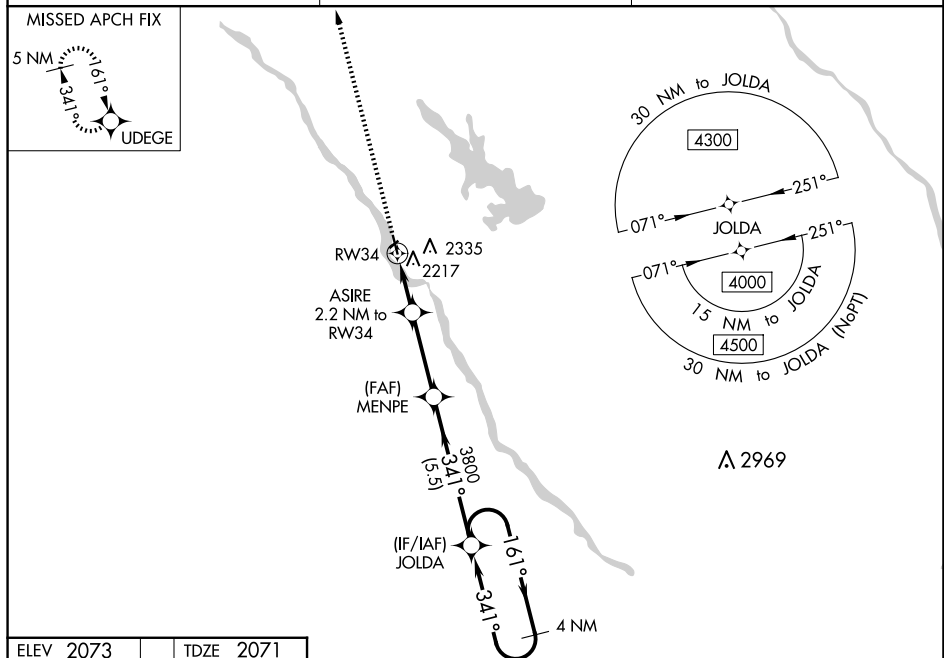
WAAS CH <b>53338</b> <b>W34A</b>	APP CRS <b>341°</b>	Rwy Idg <b>3900</b> TDZE <b>2071</b> Apt Elev <b>2073</b>
--	------------------------	---

## RNAV (GPS) RWY 34

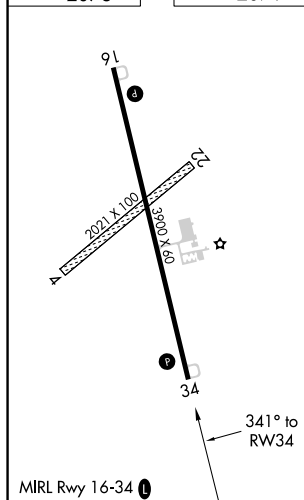
LOUP CITY MUNI (ØF4)





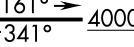

 <b>VNA</b>	<p>DME/DME RNP-0.3 NA. Baro-VNAV NA. Use Evelyn Sharp Field altimeter setting; when not received, use Broken Bow altimeter setting and increase LPV DA to 2459 and all visibilities <math>\frac{3}{8}</math> mile, LNAV/VNAV DA to 2500 and all visibilities <math>\frac{3}{8}</math> mile; increase all MDA 100 feet. Helicopter visibility reduction below 1 SM NA. Circling NA to Rwy 4 and 22.</p>	<p><b>MISSED APPROACH:</b> Climb to 4100 direct UDEGE and hold.</p>
---	--	---

ODX ASOS <b>119.925</b>	MINNEAPOLIS CENTER <b>126.05 278.8</b>	CTAF <b>122.9 0</b>
----------------------------	---	------------------------



ELEV 2073		TDZE 2071
-----------	--	-----------



4100		UDEGE		* LNAV only		4 NM Holding Pattern	
							
		ASIRE 2.2 NM to RW34		MENPE 3800		JOLDA 3800	
		RW34					
2.2 NM		3.1 NM		5.5 NM		GP 3.00° TCH 40	
CATEGORY		A	B	C	D		
LPV	DA	2369-1	298 (300-1)			NA	
LNAV/ VNAV	DA	2410-1 <sup>1</sup> / <sub>8</sub>	339 (400-1 <sup>1</sup> / <sub>8</sub> )			NA	
LNAV	MDA	2520-1	449 (500-1)			NA	
 CIRCLING		2720-1 647 (700-1)	2740-1 667 (700-1)			NA	

LOUP CITY, NEBRASKA  
Orig 15OCT15

41°17'N-98°59'W

LOUP CITY MUNI (ØF4)

## RNAV (GPS) RWY 34

NC-2, 07 AUG 2025 to 04 SEP 2025

NC-2, 07 AUG 2025 to 04 SEP 2025