

WAAS CH 99538 W34A	APP CRS 327°	Rwy Ldg TDZE Apt Elev 35 35
--	------------------------	---

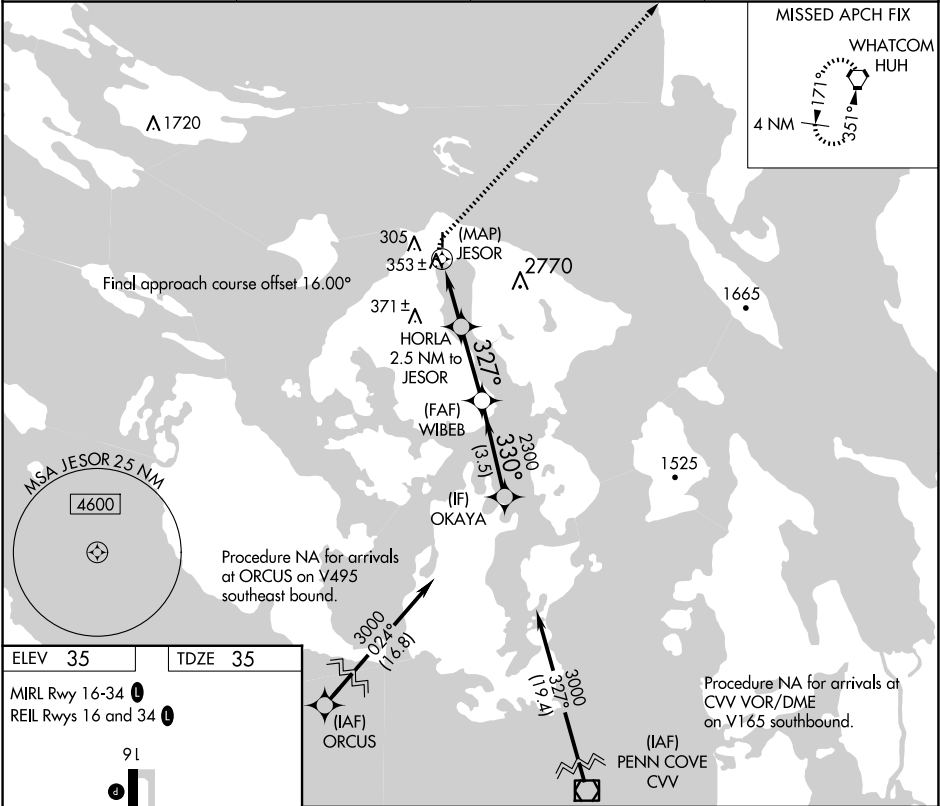
RNAV (GPS) RWY 34

ORCAS ISLAND (ORS)

DME/DME RNP-0.3 NA. Helicopter visibility reduction below 1 SM NA.
WAAS required, if unable see RNAV GPS-A. When local altimeter setting not received, use Friday Harbor altimeter setting and increase all MDA 40 feet and LP Cat B visibility ¼ mile. Night landing: Rwy 34 NA.

MISSED APPROACH: Climbing right turn to 2000 direct HUH VORTAC and hold.

AWOS-3P 135.425	WHIDBEY APP CON 118.2 285.65 (SOUTH)	VICTORIA APP CON 132.7 (NORTH)	CTAF 128.250
---------------------------	--	--	------------------------



ELEV 35	TDZE 35	MIRL Rwy 16-34 REIL Rws 16 and 34			
<div>91 0.8% Up 2001 X 40 34 327°</div>		<div>2000 HUH VGSI and descent angles not coincident (VGSI Angle 4.00/TCH 42).</div>			OKAYA
<div>2000 JESOR HORLA 2.5 NM to JESOR WIBEB 327° 2300 330° 3000</div>		<div>3.67° TCH 45</div>			
<div>0.5 2.5 NM 2.7 NM 3.5 NM</div>					
CATEGORY	A	B	C	D	
LP MDA	760-1	725 (800-1)	NA		
CIRCLING	1120-1¼ 1085 (1100-1¼)	1820-1½ 1785 (1800-1½)	NA		