

NEIGH, NEBRASKA

AL-10382 (FAA)

24305

APP CRS
188°

Rwy Idg	3700
TDZE	1762
Apt Elev	1774

RNAV (GPS) RWY 19

ANTELOPE COUNTY (4V9)

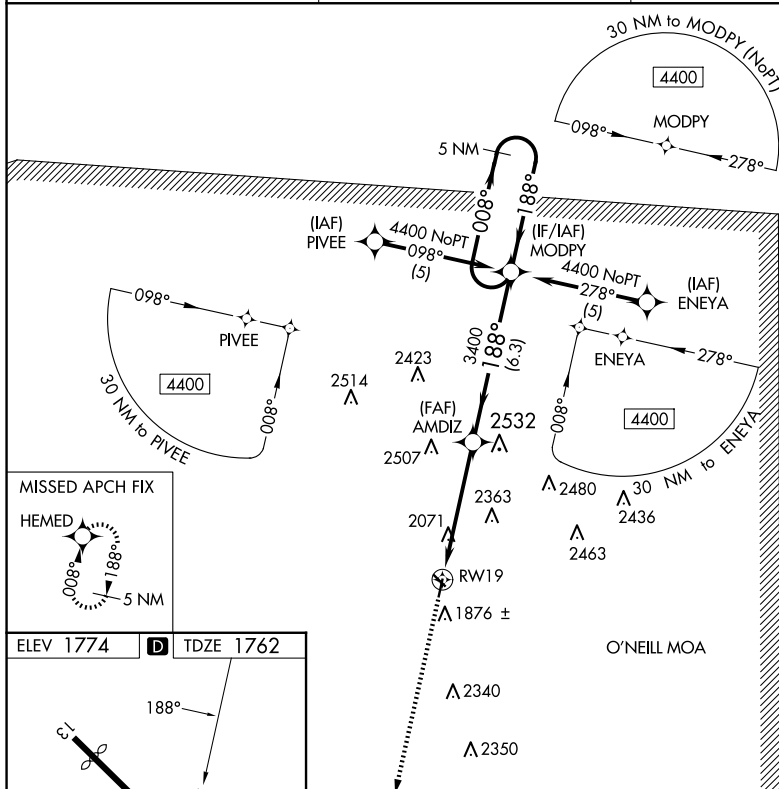
RNP APCH - GPS.

T Visibility reduction by helicopters NA. Use Albion altimeter
A NA setting, when not received, use Norfolk altimeter setting and
increase all MDA 40 feet.


MISSED APPROACH: Climb to 4400 direct HEMED and hold.

AWOS-3PT
119.275

MINNEAPOLIS CENTER
128.0 257.95

UNICOM
122.8 (CTAF) **L**

MISSED APCH FIX

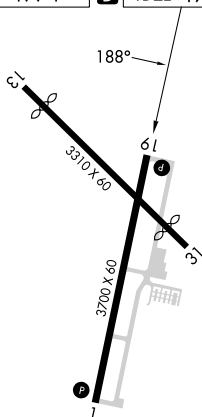


HEMED

Diagram showing the structure of HEMED, a molecule with a central carbon atom bonded to two oxygen atoms (O) and two nitrogen atoms (N). The bond angles are labeled as 108° and 188°. A scale bar indicates 5 nm.

ELEV 1774

D	TDZE 1762
---	-----------

MIRL Rwyys 1-19 and 13-31 **L**

NELIGH, NEBRASKA

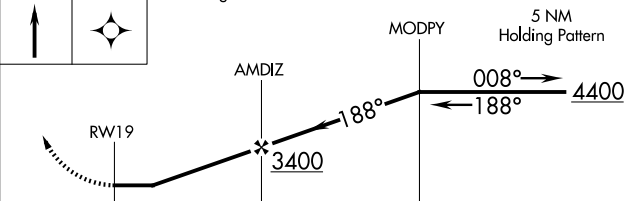
Orig-B 08SEP22


42°07'N-98°02'W

ANTELOPE COUNTY (4V9)
RNAV (GPS) RWY 19

NC-2, 07 AUG 2025 to 04 SEP 2025

4400	HEMED	Visual Segment - Obstacles.
------	-------	-----------------------------



CATEGORY	5 NM		6.3 NM	
	A	B	C	D
INAV MDA	2380-1	618 (700-1)	NA	
 CIRCLING	2380-1 606 (700-1)	2440-1 666 (700-1)	NA	