

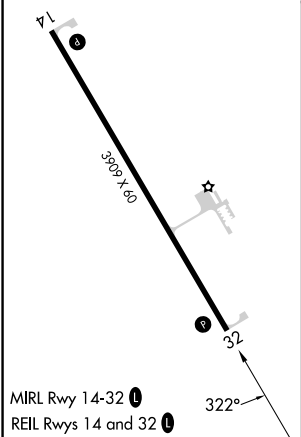
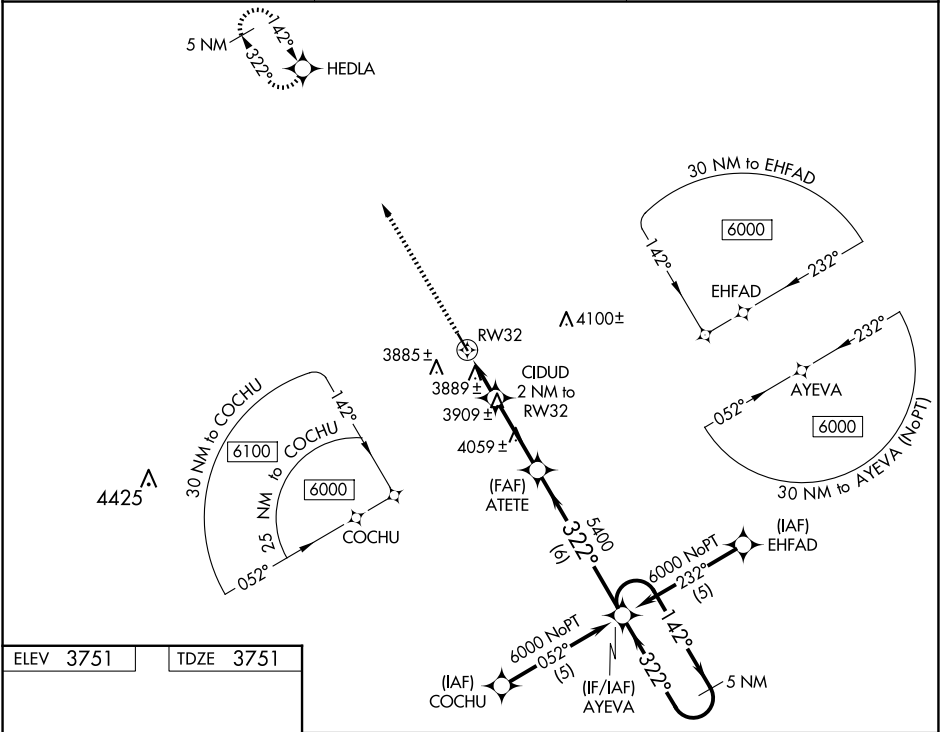
WAAS CH <b>78214</b> <b>W32A</b>	APP CRS <b>322°</b>	Rwy Idg TDZE Apt Elev	<b>3909</b> <b>3751</b> <b>3751</b>
--	------------------------	-----------------------------	---



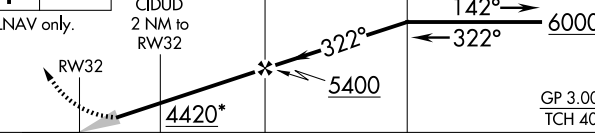
RNAV (GPS) RWY 32

MODISSETT (9V5)

RNP APCH - GPS.	MISSED APPROACH: Climb to 6000 direct HEDLA and hold.
<div><div>▼</div>Baro-VNAV NA. Visibility reduction by helicopters NA.</div> <div><div>▲</div>NA Use Pine Ridge altimeter setting.</div>	

IEN ASOS <b>126.775</b>	DENVER CENTER <b>127.95 338.2</b>	CTAF <b>122.9</b> 
----------------------------	--------------------------------------	--



6000	HEDLA				
					
*LNAV only.					
					
CATEGORY		A	B	C	D
LPV	DA	4181-1½	430 (500-1½)	NA	
LNAV/ VNAV	DA	4294-2	543 (600-2)	NA	
LNAV	MDA	4320-1	569 (600-1)	NA	
CIRCLING		4380-1 629 (700-1)	4420-1 669 (700-1)	NA	

NC-2, 07 AUG 2025 to 04 SEP 2025

NC-2, 07 AUG 2025 to 04 SEP 2025