

RED CLOUD, NEBRASKA

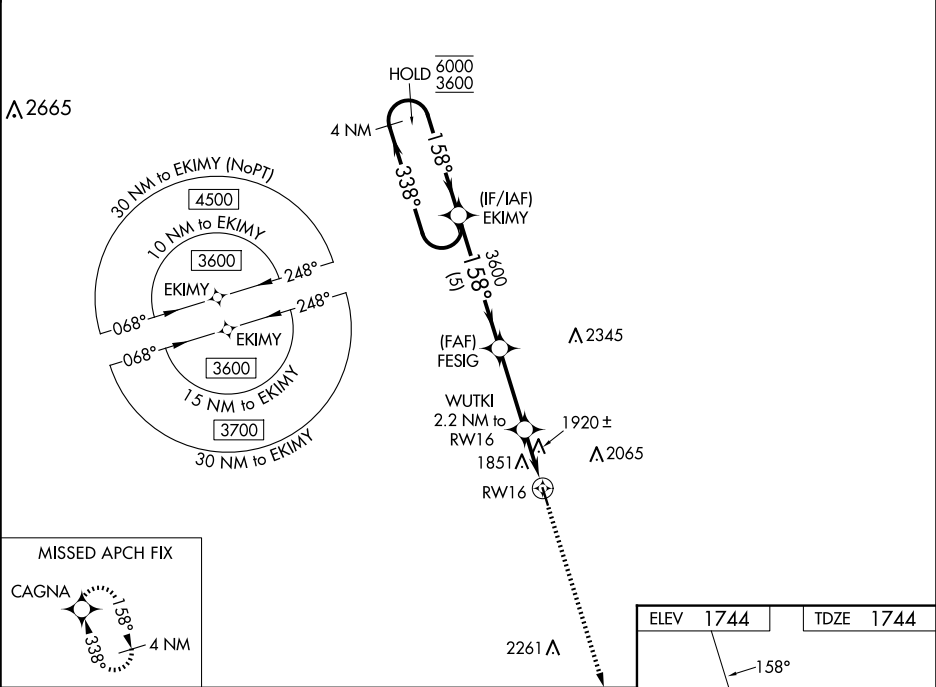
AL-10380 (FAA)

24249

WAAS CH 82027 W16A	APP CRS 158°	Rwy Idg TDZE Apt Elev	3702 1744 1744
--	------------------------	-----------------------------	---

RNAV (GPS) RWY 16
RED CLOUD MUNI (7V7)

RNP APCH - GPS.		MISSED APPROACH: Climb to 3500 direct CAGNA and hold.
<div><div><div><div></div><div></div></div><div><div></div><div></div></div></div><div>NA</div></div>	Baro-VNAV NA. Rwy 16 helicopter visibility reduction below ¾ SM NA. Use K82 altimeter setting; when not received, use HSI altimeter setting and increase LPV DA to 2120 feet; increase LNAV/VNAV DA to 2290 feet and all visibilities ¼ SM. Increase all MDAs 60 feet.	
K82 AWOS-3PT 118.45	MINNEAPOLIS CENTER 119.4 278.8	CTAF 122.90



4 NM Holding Pattern		EKIMY	FESIG	3500	CAGNA
6000 ← 338° → 158° → 3600			3600	WUTKI 2.2 NM to RW16	
GP 3.25° TCH 44			3600	2540	RW16
		5 NM	3.1 NM	2.2 NM	
CATEGORY	A	B	C	D	
LPV DA	2075-1	331 (400-1)	NA		
LNAV/VNAV DA	2245-1⅜	501 (600-1⅜)	NA		
LNAV MDA	2240-1	496 (500-1)	NA		
CIRCLING	2280-1 536 (600-1)	2300-1 556 (600-1)	NA		

RED CLOUD, NEBRASKA
Amdt 1 05SEP24

40°05'N-98°32'W

RED CLOUD MUNI (7V7)
RNAV (GPS) RWY 16

NC-2, 07 AUG 2025 to 04 SEP 2025