

WAAS
CH **78213**
W06A

APP CRS
064°

Rwy Ldg **4000**
TDZE **54**
Apt Elev **55**

RNAV (GPS) RWY 6

ROBERT/BOB/CURTIS MEML (D76) (PFNO)

RNP APCH.

▼

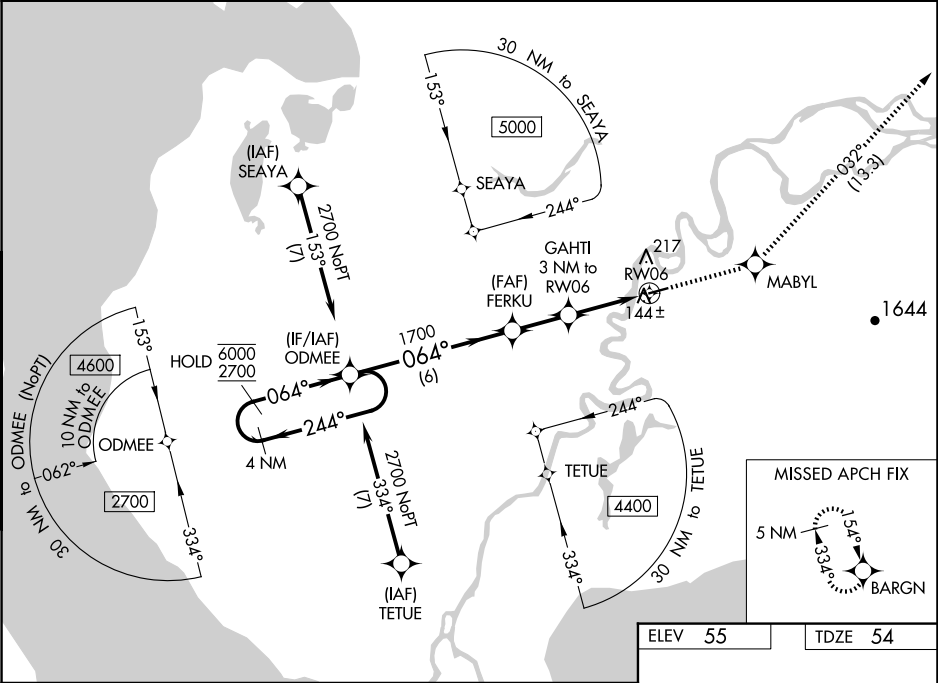
▲

⊞

Rwy 6 helicopter visibility reduction below ¾ SM NA.
For uncompensated Baro-VNAV systems, LNAV/VNAV
NA below -22°C or above 54°C.

MISSED APPROACH: Climb to 4400 direct MABYL and on track 032° to BARGN and hold, continue climb-in-hold to 4400.

AWOS-3P 120.0	ANCHORAGE CENTER 119.2 263.0	CTAF 122.7 0
-------------------------	--	------------------------



VGSI and RNAV glidepath not coincident (VGSI Angle 3.00/TCH 25).

4 NM Holding Pattern

ODMEE

FERKU

MABYL

BARGN

GAHTI 3 NM to RW06

*LNAV only

GP 3.00° TCH 40

6 NM

2.1 NM

1.8 NM

1.2 NM

4000 X 100

064°

CATEGORY	A	B	C	D
LPV DA	304-1 250 (300-1)			
LNAV/VNAV DA	355-1 301 (300-1)			
LNAV MDA	460-1 406 (500-1)		460-1½ 406 (500-1½)	
CIRCLING	520-1 465 (500-1)		520-1½ 465 (500-1½) 760-2¼ 705 (800-2¼)	

MIRL Rwy 6-24 0