


WAAS CH <b>78313</b> <b>W24A</b>	APP CRS <b>244°</b>	Rwy Ldg <b>4000</b> TDZE <b>55</b> Apt Elev <b>55</b>
--	------------------------	---

## RNAV (GPS) RWY 24

ROBERT/BOB/CURTIS MEML (D76) (PFNO)

RNP APCH.

 For uncompensated Baro-VNAV systems, LNAV/VNAV NA below -20°C or above 54°C.

**MISSED APPROACH:** Climb to 2700 direct ODME and hold, continue climb-in-hold to 2700.

AWOS-3P

120.0

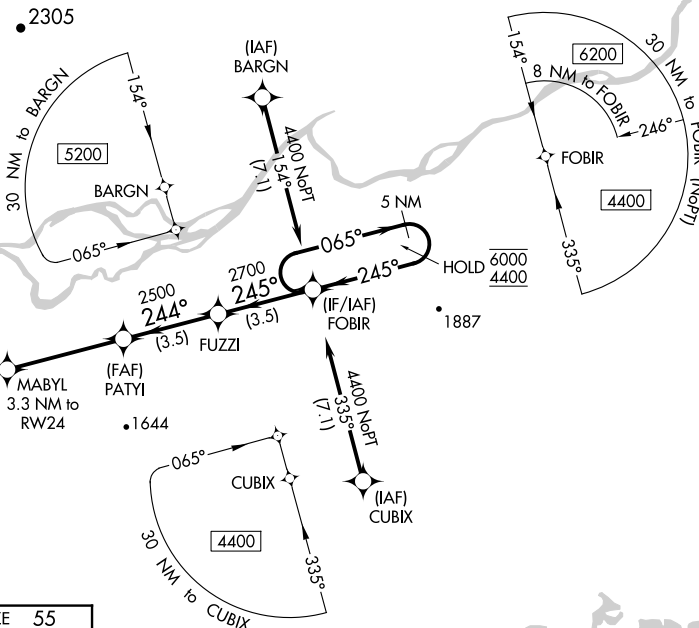
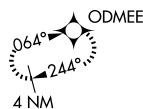
ANCHORAGE CENTER

**119.2 263.0**

CTAF

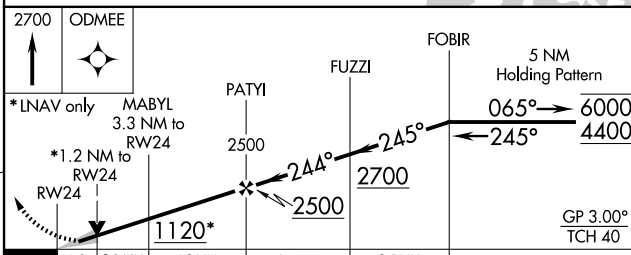
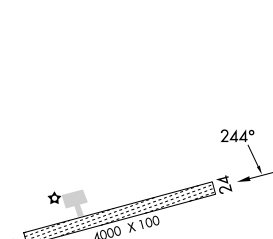
122.7 0


MISSED APCH FIX



ELEV 55

TDZF 55



		1.2 2.1 NM		4.3 NM		3.5 NM		3.5 NM	
CATEGORY		A		B		C		D	
LPV	DA			305-1		250 (300-1)			
RNAV/ VNAV	DA			355-1		300 (300-1)			
RNAV	MDA	460-1		405 (500-1)		460-1½		405 (500-1½)	
 CIRCLING		520-1		465 (500-1)		520-1½ 465 (500-1½)		760-2¼ 705 (800-2¼)	

MIRL Rwy 6-24 **L**

NOORVIK, ALASKA  
Amdt 1 31DEC20

ROBERT/BOB/CURTIS MEML (D76) (PFNO)

RNAV (GPS) RWY 24

66°49'N-161°01'W

AK, 07 AUG 2025 to 02 OCT 2025