

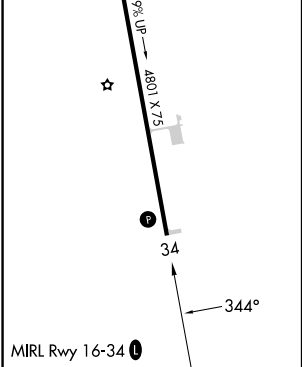
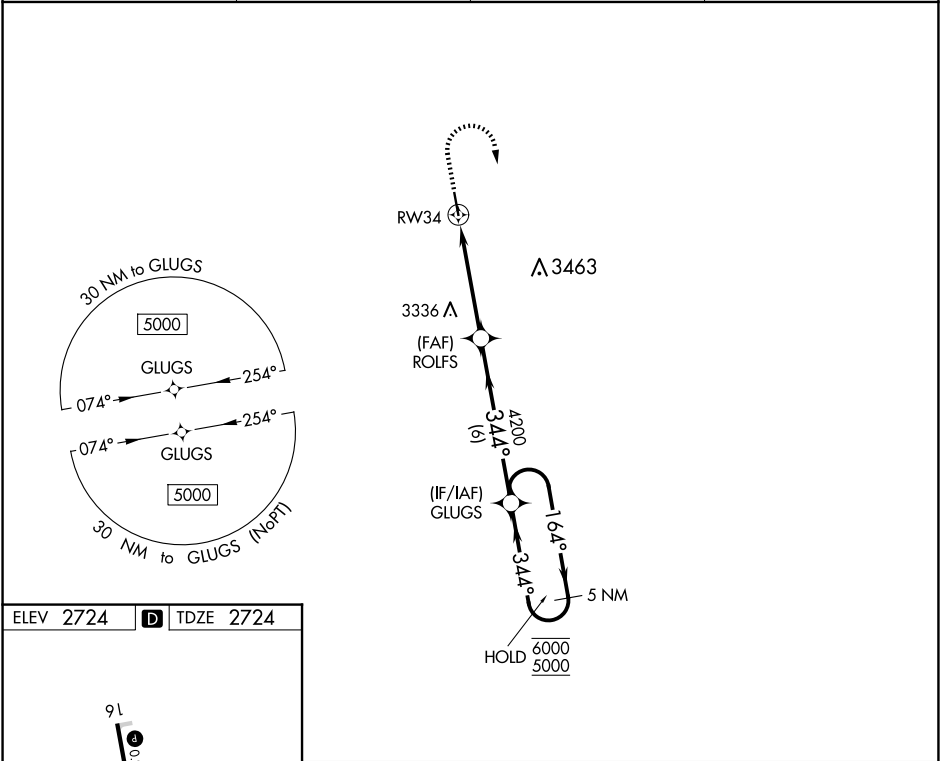
APP CRS	Rwy Idg	4800
344°	TDZE	2724
	Apt Elev	2724

RNAV (GPS) RWY 34

ROSEBUD SIOUX TRIBAL (SUO)

RNP APCH - GPS.	MISSED APPROACH: Climb to 3400 then climbing right turn to 5000 direct GLUGS and hold.
NA Rwy 34 helicopter visibility reduction below 1 SM NA. When local altimeter setting not received, use VTN altimeter setting. Procedure NA at night.	

AWOS-3P 119,075	VTN ASOS 118,075	DENVER CENTER 127.95 338.2	CTAF 122.9
--------------------	---------------------	-------------------------------	---------------



3400	5000	GLUGS	VGSi and descent angles not coincident (VGSi Angle 3.00/TCH 30).	
↑	↗	✧	ROLFS	GLUGS
RW34		4200	344°	5 NM Holding Pattern
4.5 NM		6 NM	164°	6000/5000
CATEGORY	A	B	C	D
LNAV MDA	3380-1	656 (700-1)	3380-1 656 (700-1)	NA
CIRCLING	3380-1	656 (700-1)	3440-2 716 (800-2)	NA

NC-1, 07 AUG 2025 to 04 SEP 2025

NC-1, 07 AUG 2025 to 04 SEP 2025