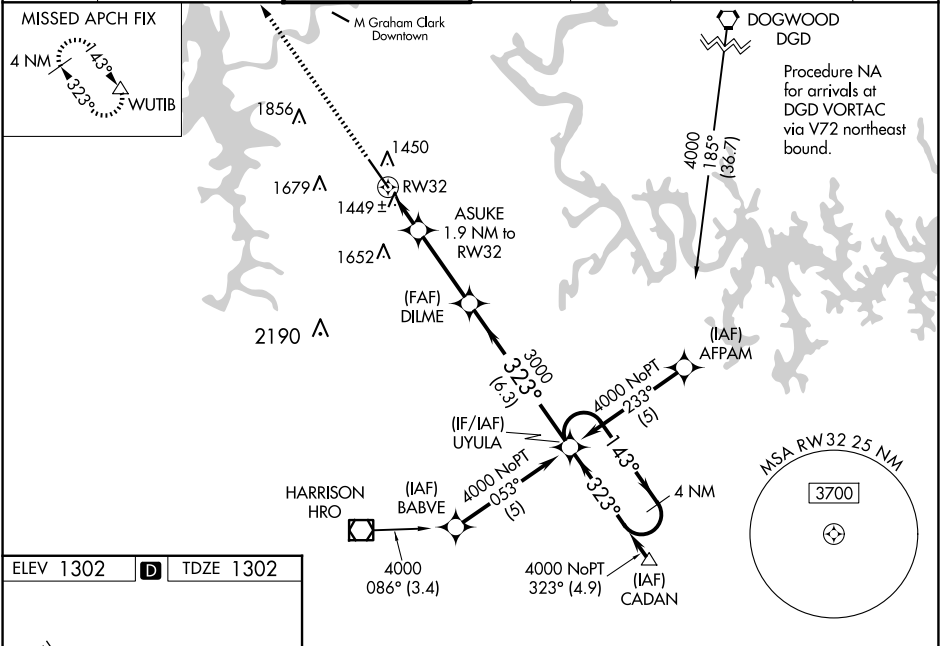


WAAS CH <b>93911</b> <b>W32A</b>	APP CRS <b>323°</b>	Rwy ldg <b>7140</b> TDZE <b>1302</b> Apt Elev <b>1302</b>
--	------------------------	---

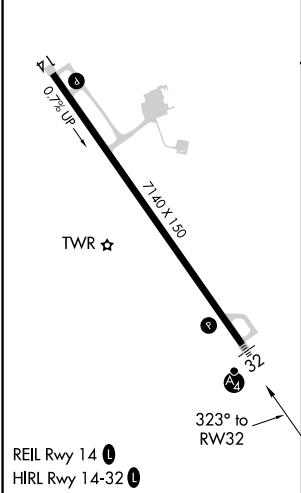
RNAV (GPS) RWY 32  
BRANSON (BBG)

RNP APCH. When local altimeter setting not received, use Harrison altimeter setting: increase LPV DA to 1549 feet; increase LNAV/VNAV DA to 1804 feet and all visibilities ¼ SM; increase all MDAs 60 feet and visibility Cats C and D ½ SM. VDP and Baro-VNAV NA when using Harrison altimeter setting. For uncompensated Baro-VNAV systems, LNAV/VNAV NA below -17°C (2°F) or above 46°C (114°F). Inop table does not apply.	MALSF 	MISSED APPROACH: Climb to 4000 direct WUTIB and hold.
---	-----------	---

ATIS <b>124.625</b>	SPRINGFIELD APP CON <b>126.35</b>	BRANSON TOWER ★ <b>128.15</b> (CTAF)	GND CON <b>118.4</b>	CLNC DEL <b>118.4</b>	SPRINGFIELD CLNC DEL <b>126.35</b> (When tower closed)	UNICOM <b>122.95</b>
------------------------	--------------------------------------	---	-------------------------	--------------------------	--	-------------------------



ELEV 1302		TDZE 1302
-----------	--	-----------



4000	WUTIB $\triangle$	ASUKE 1.9 NM to RW32	DILME	YUYULA	4 NM Holding Pattern
* LNAV only		* 1.1 NM to RW32			
1940*					
1.1 NM	0.8	3.2 NM	6.3 NM		
CATEGORY	A	B	C	D	
LPV DA	1502-1	200 (200-1)			
LNAV/VNAV DA	1757-1½	455 (500-1½)			
LNAV MDA	1700-1	398 (400-1)			
					1700-1¼ 398 (400-1¼)
CIRCLING	1760-1 458 (500-1)	1900-1 598 (600-1)	2220-2¾ 918 (1000-2¾)	2220-3 918 (1000-3)	

NC-3, 07 AUG 2025 to 04 SEP 2025

NC-3, 07 AUG 2025 to 04 SEP 2025