

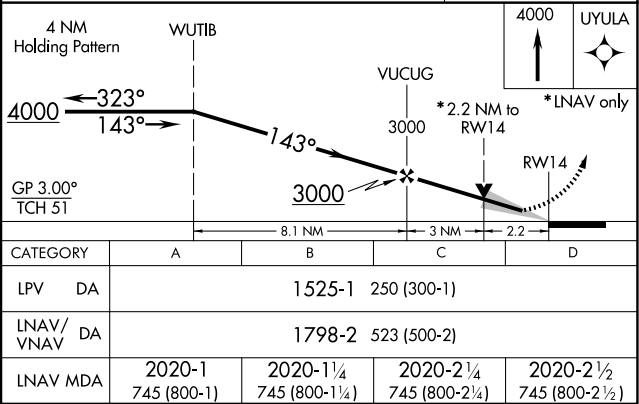
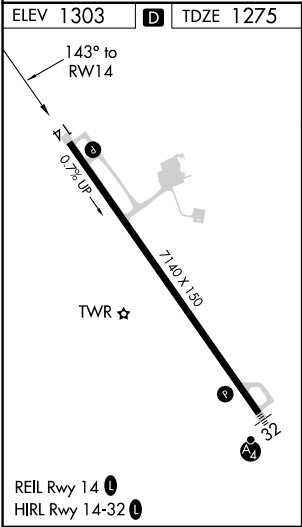
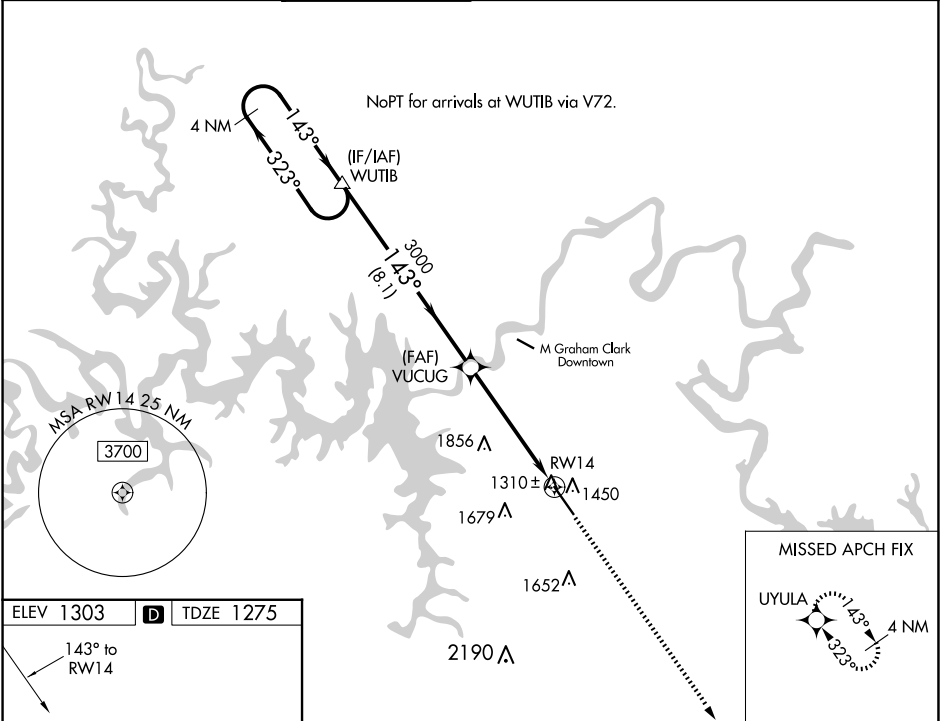
WAAS CH 49111 W14A	APP CRS 143°	Rwy Idg TDZE Apt Elev	7140 1275 1303
--	------------------------	-----------------------------	---

RNAV (GPS) RWY 14

BRANSON (BBG)

RNP APCH.	<div><div>▼</div><div>▲</div><div>For uncompensated Baro-VNAV systems, LNAV/VNAV NA below -17°C or above 46°C. When local altimeter setting not received, use Harrison altimeter setting and increase all DA 47 feet and all MDA 60 feet. VDP and Baro-VNAV NA when using Harrison altimeter setting.</div></div>	MISSED APPROACH: Climb to 4000 direct UYULA and hold.
-----------	---	---

ATIS 124.625	SPRINGFIELD APP CON 126.35	BRANSON TOWER★ 128.15 (CTAF) 0	GND CON 118.4	CLNC DEL 118.4	SPRINGFIELD CLNC DEL 126.35 (When tower closed)	UNICOM 122.95
------------------------	--------------------------------------	---	-------------------------	--------------------------	--	-------------------------



NC-3, 07 AUG 2025 to 04 SEP 2025

NC-3, 07 AUG 2025 to 04 SEP 2025