

LOC/DME I-BBG	APP CRS	Rwy Idg	7140
111.35	323°	TDZE	1302
Chan 50 (Y)		Apt Elev	1302

ILS or LOC RWY 32

BRANSON (BBG)

▼

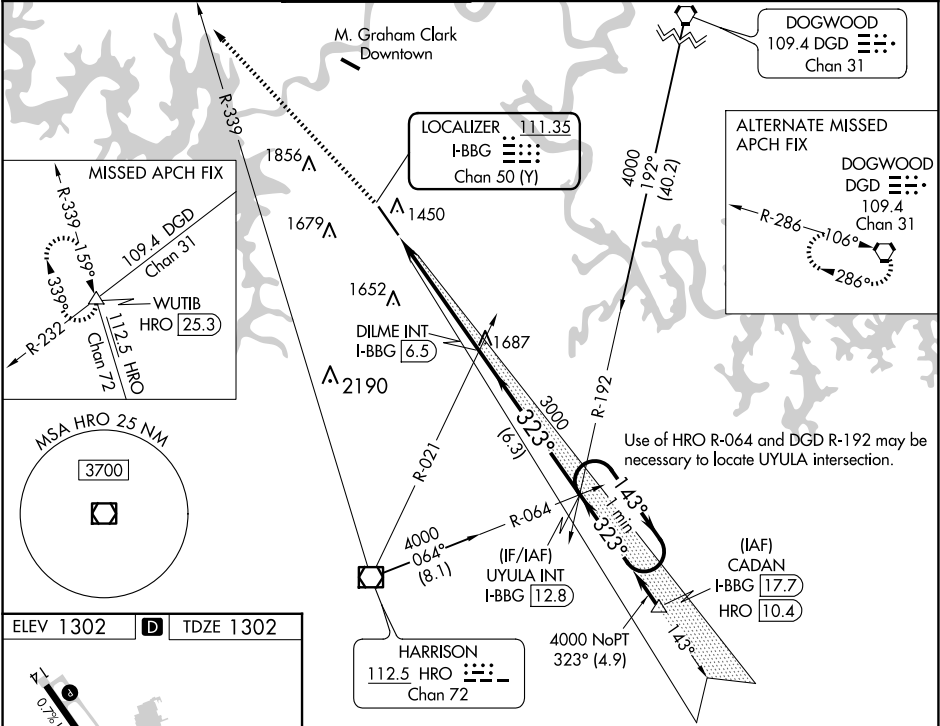
NA

Inop table does not apply. When local altimeter setting not received, use Harrison altimeter setting and increase S-ILS 32 DA to 1549 feet; increase all MDAs 60 feet and S-LOC 32 visibility Cat C/D and Circling visibility Cat C ¼ SM. VDP NA when using Harrison altimeter setting.

MALSF

MISSED APPROACH: Climb to 4000 on heading 315° and HRO VOR/DME R-339 to WUTIB INT/HRO 25.3 DME and hold.

ATIS 124.625	SPRINGFIELD APP CON 126.35	BRANSON TOWER★ 128.15 (CTAF) 0	GND CON 118.4	CLNC DEL 118.4	SPRINGFIELD CLNC DEL 126.35 (When tower closed)	UNICOM 122.95
-----------------	-------------------------------	-----------------------------------	------------------	-------------------	---	------------------



ELEV 1302

TDZE 1302

REIL Rwy 14

HIRL Rwy 14-32

FAF to MAP 5.1 NM

Knots	60	90	120	150	180
Min:Sec	5:06	3:24	2:33	2:02	1:42

4000 ↑ hdg 315°		HRO R-339	WUTIB △	UYULA INT I-BBG (12.8)				One Minute Holding Pattern
*LOC only.		*I-BBG (2.7)		DILME INT I-BBG (6.5)	3000		143°→	4000
I-BBG (1.4)		3000		323°		←323°		
GS 3.00° TCH 50								
1.3 NM		3.8 NM		6.3 NM				
CATEGORY	A		B		C		D	
S-ILS 32			1502-1		200 (200-1)			
S-LOC 32			1760-1		458 (500-1)			
CIRCLING	1760-1 458 (500-1)		1900-1 598 (600-1)		2220-2¾ 918 (1000-2¾)		2220-3 918 (1000-3)	