

RNP APCH - GPS.

▼

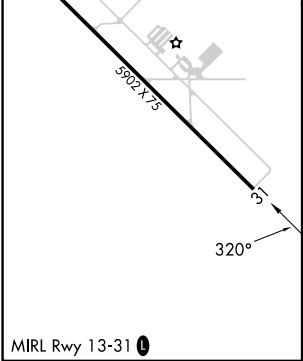
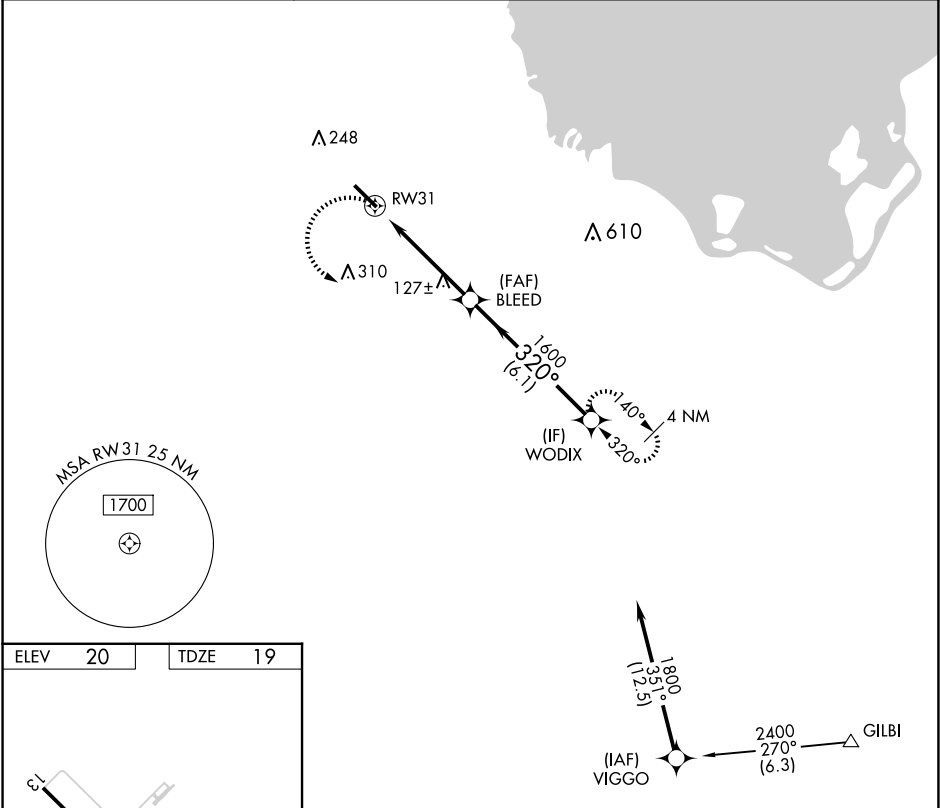
Procedure NA at night. Rwy 31 helicopter visibility reduction below 1 SM NA.



▲

When local altimeter setting not received, use Immokalee altimeter setting.

MISSED APPROACH: Climbing left turn to 1600 direct WODIX and hold.

AWOS-3PT 124.175	MIAMI CENTER 132.45 307.1	UNICOM 123.05 (CTAF) 0
---------------------	------------------------------	---------------------------



<div><div><div>1600</div><div></div></div><div><div>WODIX</div><div></div></div></div>					
<div><div><div><div><div><div></div><div>RW31</div></div><div><div><div></div><div>BLEED</div><div>1600</div></div><div><div><div></div><div>1800</div><div>WODIX</div></div></div><div><div><div>320°</div><div>Procedure Turn NA</div></div></div></div><div><div><div>3.04°</div><div>TCH 35°</div></div><div><div>4.8 NM</div><div>6.1 NM</div></div></div></div></div></div></div>					
CATEGORY	A		B	C	D
LNAV MDA	440-1 421 (500-1)		440-1¼ 421 (500-1¼)		
CIRCLING	500-1 480 (500-1)		500-1½ 480 (500-1½)		680-2 660 (700-2)

SE-3, 07 AUG 2025 to 04 SEP 2025

SE-3, 07 AUG 2025 to 04 SEP 2025