

WAAS CH <b>50133</b> <b>W11A</b>	APP CRS <b>105°</b>	Rwy Idg TDZE <b>1183</b> Apt Elev <b>1183</b>
--	------------------------	---

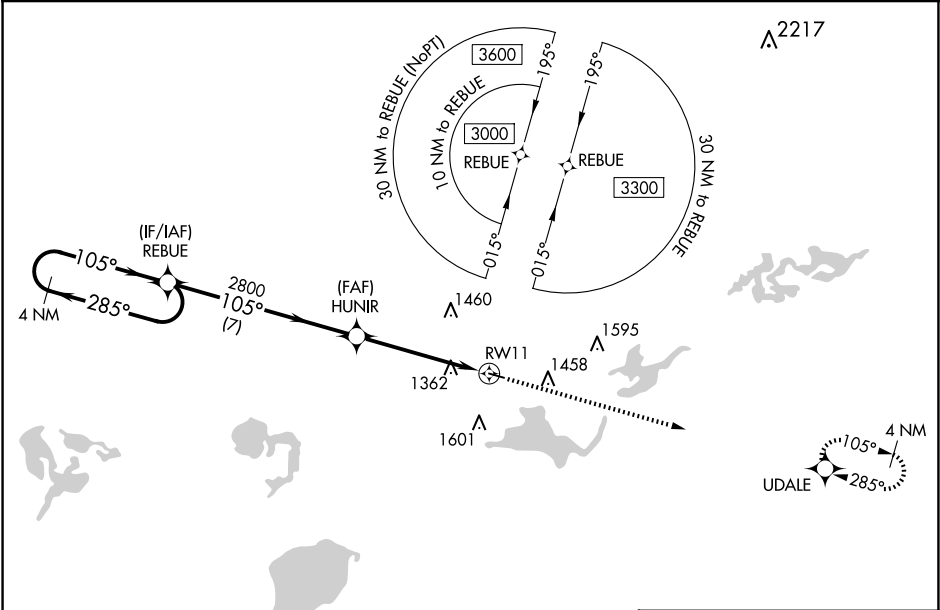
RNAV (GPS) RWY 11

PAYNESVILLE MUNI (PEX)

Baro-VNAV and VDP NA when using Litchfield altimeter setting. For uncompensated Baro-VNAV systems, LNAV/VNAV NA below -17°C (2°F) or above 54°C (130°F). DME/DME RNP-0.3 NA. When local altimeter setting not received, use Litchfield altimeter setting and increase all DA 51 feet and all MDA 60 feet; increase LPV and LNAV/VNAV all Cats visibility 1⁄8 mile and LNAV Cat C and Circling Cat C visibility 1⁄4 mile.

MISSED APPROACH:  
Climb to 3000 direct UDALÉ and hold.

AWOS-3PT <b>120.35</b>	MINNEAPOLIS CENTER <b>125.5 323.1</b>	CTAF <b>122.9 0</b>
---------------------------	--	------------------------



ELEV 1183

TDZE 1183

4 NM Holding Pattern

REBUE

HUNIR

3000

285°

105°

105°

2800

7 NM

3.5 NM

1.4 NM

3000

UDALÉ

\*1.4 NM to RW11

\*LNAV only.

RW11

105° to RW11

3302 X 75

20

CATEGORY	A	B	C	D
LPV DA	1383-1 200 (200-1)			NA
LNAV/VNAV DA	1653-1½ 470 (500-1½)			NA
LNAV MDA	1680-1 497 (500-1)		1680-1¾ 497 (500-1¾)	NA
CIRCLING	1680-1 497 (500-1)	1760-1 577 (600-1)	1920-2 737 (800-2)	NA

MIRL Rwy 11-29 0  
REIL Rws 11 and 29 0