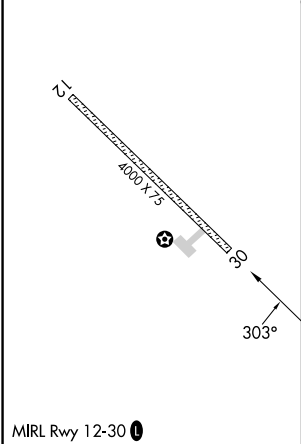
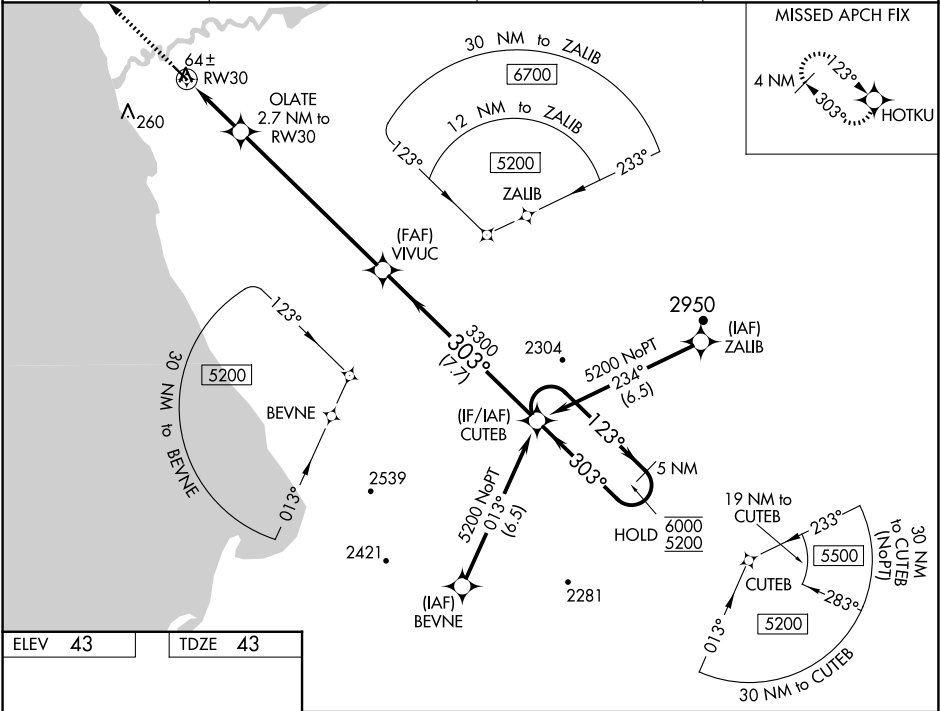


WAAS CH 58310 W30A	APP CRS 303°	Rwy Idg TDZE 43 Apt Elev 43
--	------------------------	---

RNAV (GPS) RWY 30
QUINHAGAK (AQH) (PAQH)

RNP APCH - GPS.	MISSED APPROACH: Climb to 2500 direct HOTKU and hold, continue climb-in-hold to 2500.
-----------------	---

AWOS-3P 121.575	ANCHORAGE CENTER 125.2 372.0	KENAI RADIO 122.1	UNICOM 122.8 (CTAF) 0
---------------------------	--	-----------------------------	---------------------------------



2500	HOTKU	OLATE 2.7 NM to RW30	VIVUC	CUTEB	5 NM Holding Pattern
0.7 NM to RW30	0.7 NM to RW30	2 NM	7.1 NM	7.7 NM	
960	3300	3300	6000	5200	GP 3.10° TCH 35
CATEGORY	A	B	C	D	
LPV DA	293-1	250 (300-1)			
RNAV/VNAV DA	293-1	250 (300-1)			
RNAV MDA	320-1	277 (300-1)			
CIRCLING	400-1 357 (400-1)	500-1 457 (500-1)	580-1½ 537 (600-1½)	600-2 557 (600-2)	

AK, 07 AUG 2025 to 02 OCT 2025

AK, 07 AUG 2025 to 02 OCT 2025