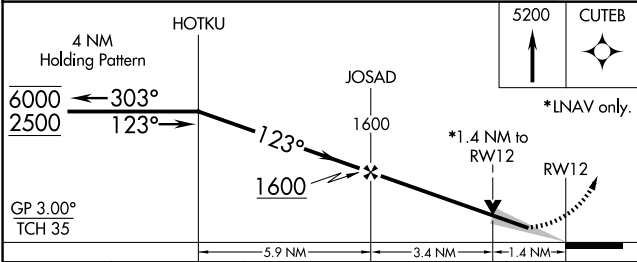
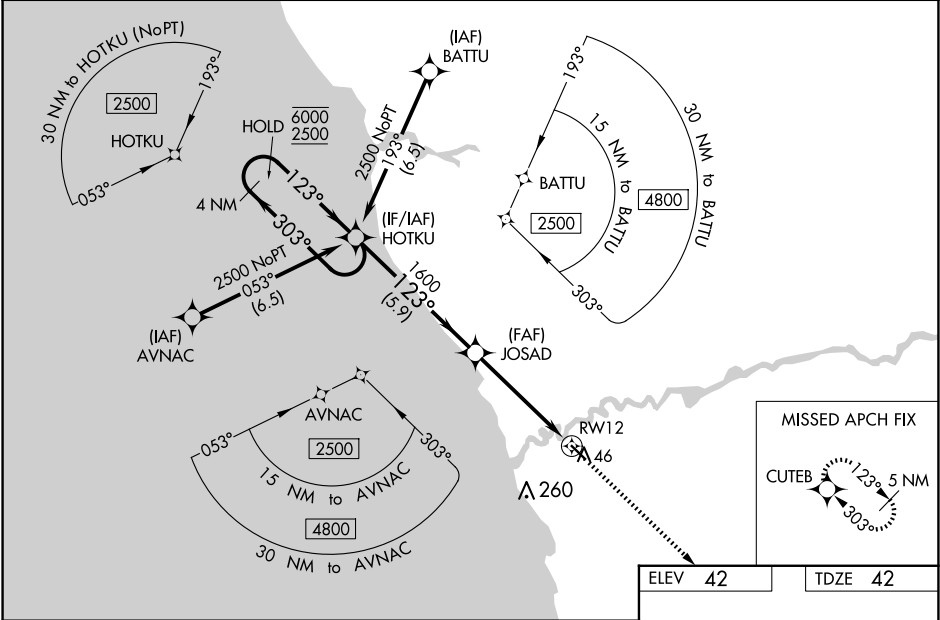


WAAS CH <b>99311</b> <b>W12A</b>	APP CRS <b>123°</b>	Rwy Idg <b>4000</b> TDZE <b>42</b> Apt Elev <b>42</b>
--	------------------------	---

RNAV (GPS) RWY 12  
QUINHAGAK (AQH) (PAQH)

RNP APCH.	<p>Procedure NA at night. Baro-VNAV and VDP NA when using Kipnuk altimeter setting. For uncompensated Baro-VNAV systems, LNAV/VNAV NA below -21°C or above 54°C. When local altimeter setting not received, use Kipnuk altimeter setting and increase all DA and MDA 160 feet; increase LPV all Cats visibility and LNAV/VNAV all Cats visibility 1/8 SM, LNAV Cats C, D visibility 3/8 SM, increase Circling Cat C visibility 1/2 SM, increase Circling Cat D visibility 1/4 SM.</p>	MISSED APPROACH: Climb to 5200 direct CUTEB and hold, continue climb-in-hold to 5200.
-----------	---	---

AWOS-3P <b>121.575</b>	ANCHORAGE CENTER <b>125.2 372.0</b>	KENAI RADIO <b>122.1</b>	UNICOM <b>122.8 (CTAF) 0</b>
---------------------------	--	-----------------------------	---------------------------------



CATEGORY	A	B	C	D
LPV DA	292-1 250 (300-1)			
LNAV/VNAV DA	292-1 250 (300-1)			
LNAV MDA	500-1	458 (500-1)	500-1 3/8	458 (500-1 3/8)
CIRCLING	500-1	458 (500-1)	580-1 1/2 538 (600-1 1/2)	600-2 558 (600-2)

