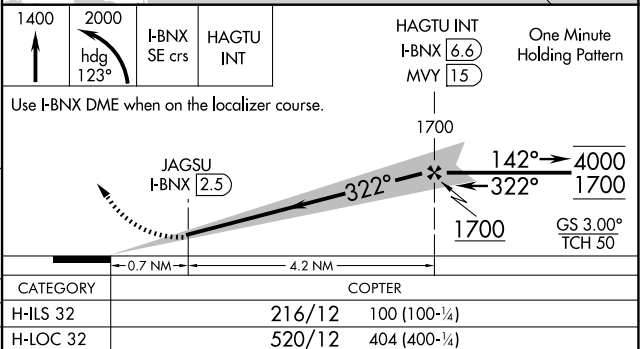
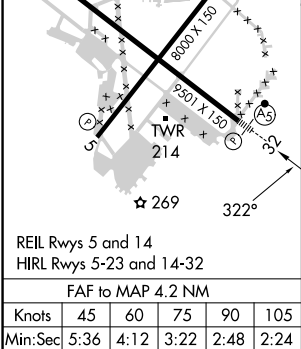
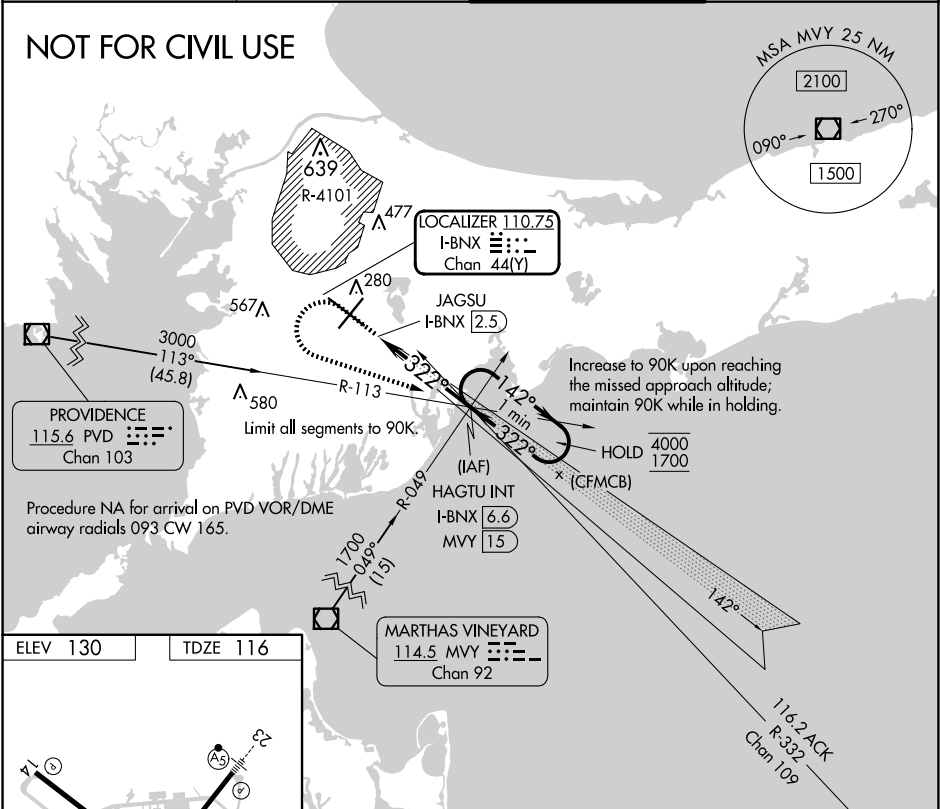


LOC/DME I-BNX <b>110.75</b> Chan <b>44(Y)</b>	APP CRS <b>322°</b>	Rwy Idg <b>9501</b> TDZE <b>116</b> Apt Elev <b>130</b>
-----------------------------------------------------	------------------------	---------------------------------------------------------------

COPTER ILS Y or LOC Y RWY 32  
CAPE COD COAST GUARD AIR STATION (FMH)

<div><div><div><div></div><div></div></div><div>NA</div></div><div>U.S. Coast Guard use only. For inop ALS, increase visibility to RVR 2400.</div></div>		<div><div>MALSR</div><div><div><div></div><div></div></div><div>A5</div></div></div>	MISSED APPROACH: Climb to 1400 then climbing left turn to 2000 on heading 123° and I-BNX localizer SE course to HAGTU INT/I-BNX 6.6 DME and hold.
ATIS 120.475 236.825	BOSTON APP CON 118.2 284.6	COAST GUARD TOWER 128.425 291.1	GND CON 124.15 275.8



NE-1, 07 AUG 2025 to 04 SEP 2025

NE-1, 07 AUG 2025 to 04 SEP 2025