

LOC/DME I-FMH
109.55
Chan **32(Y)**

APP CRS
234°

Rwy Idg
TDZE **126**
Apt Elev **130**

COPTER ILS Y or LOC Y RWY 23

CAPE COD COAST GUARD AIR STATION (FMH)

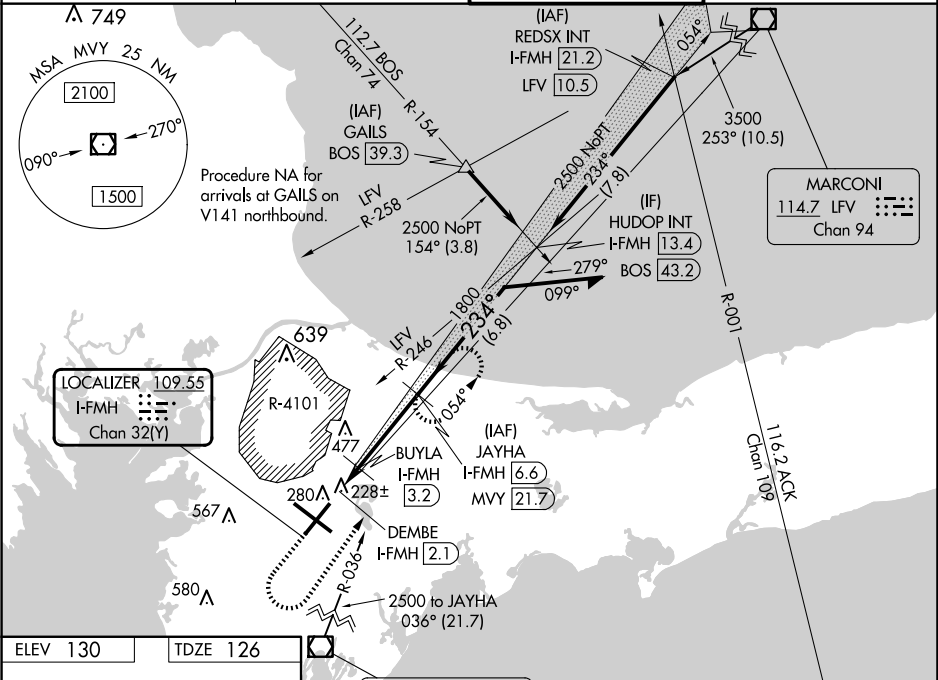
DME required.

For inop ALS increase, H-ILS 23 and H-LOC 23 visibility to RVR 2400.
United States Coast Guard only.

MALSR

MISSED APPROACH: Climb to 1400 then climbing left turn heading 050° and MVY VOR/DME R-036 to 3000 direct JAYHA and hold.

ATIS 120.475 236.825	BOSTON APP CON 118.2 284.6	COAST GUARD TOWER 128.425 291.1	GND CON 124.15 275.8
--------------------------------	--------------------------------------	---	--------------------------------



ELEV 130

TDZE 126

234°

1400

3000

hdg 050°

* LOC only.

REIL Rws 5 and 14

HIRL Rws 5-23 and 14-32

☆ 269

MARTHAS VINEYARD

114.5 MVY

Chan 92

NOT FOR CIVIL USE

ALTERNATE MISSED APCH FIX

GLESO

054°

234°

7 NM

JAYHA

I-FMH 6.6

Remain within 5 NM

054°

234°

1800

GS 3.00°

HCH 53

BUYLA

I-FMH 3.2

DEMBE

I-FMH 2.1

720*

0.6

1.1 NM

3.4 NM

CATEGORY	COPTER	
H-ILS 23	226/12	100 (100-¼)
H-LOC 23	480/12	354 (400-¼)