

WAAS CH 86909 W02A	APP CRS 026°	Rwy Ldg TDZE 1028 Apt Elev 1028
--	------------------------	---

RNAV (GPS) RWY 2

MOREHEAD-ROWAN COUNTY CLYDE A THOMAS RGNL (SYM)

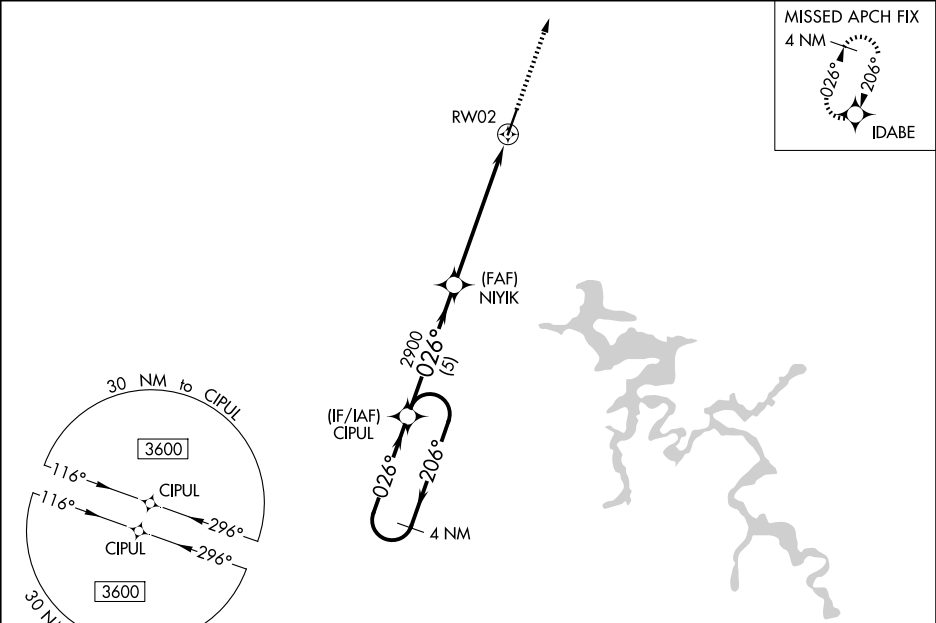
T

A

For uncompensated Baro-VNAV systems, LNAV/VNAV NA below -17°C (2°F) or above 54°C (130°F). DME/DME RNP-0.3 NA. Baro-VNAV and VDP NA when using Mount Sterling altimeter setting. When local altimeter setting not received, use Mount Sterling altimeter setting: increase all DA 50 feet and all MDA 60 feet; increase LPV all Cats and LNAV Cats C/D visibility 1/8 mile, LNAV/VNAV all Cats visibility 1/4 mile, and Circling Cats C/D visibility 1/4 mile.

MISSED APPROACH:
Climb to 3600 direct IDABE and hold.

AWOS-3 119.95	INDIANAPOLIS CENTER 124.225 360.725	UNICOM 122.7 (CTAF) 0
-------------------------	---	---------------------------------



<div>4 NM Holding Pattern</div> <div>CIPUL</div> <div>3600 ← 206° / 026° →</div> <div>GP 3.00° TCH 40</div> <div>3600 ↑</div> <div>IDABE</div> <div>NIIYK 2900</div> <div>*1.4 NM to RW02</div> <div>*LNAV only</div> <div>2900</div> <div>RW02</div> <div>5 NM</div> <div>4.4 NM</div> <div>1.4 NM</div>				
CATEGORY	A	B	C	D
LPV DA	1228-3/4		200 (200-3/4)	
LNAV/VNAV DA	1439-1 3/8		411 (500-1 3/8)	
LNAV MDA	1500-1	472 (500-1)	1500-1 3/8	472 (500-1 3/8)
CIRCLING	1520-1	492 (500-1)	1760-2 732 (800-2)	1820-2 1/2 792 (800-2 1/2)

ELEV 1028

TDZE 1028

02

0.3% UP

5500 X 100

2

2

026°

MIRL Rwy 2-20

REIL Rwy 2 and 20