

WAAS CH 8633A W03A	APP CRS 033°	Rwy Idg TDZE 3684 Apt Elev 3705
--	------------------------	---

RNAV (GPS) RWY 3

YOAKUM COUNTY (F98)

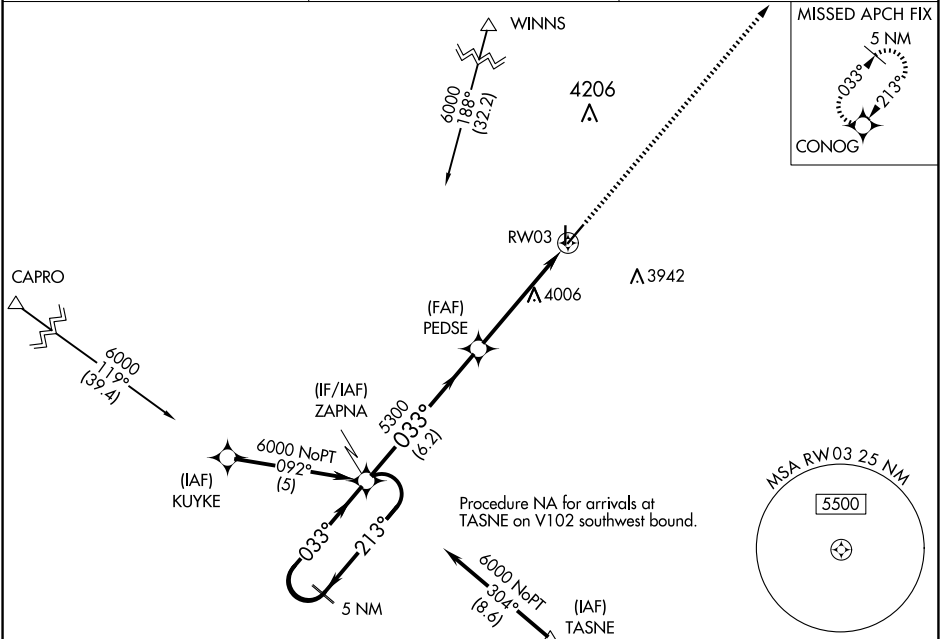
▼

NA

Baro-VNAV NA. DME/DME RNP-0.3 NA. Use Hobbs altimeter setting, when not received, use Seminole altimeter setting and increase all DA 41 feet and all MDA 60 feet, increase LPV Cals A/B visibility to 1¼ mile, LNAV/VNAV Cat A/B to 1½ mile, LNAV and Circling Cat B to 1¼ mile.

MISSED APPROACH: Climb to 6000 direct CONOG and hold.

HOB AWOS-3 119.75	FORT WORTH CENTER 132.6 269.05	CTAF 122.9 0
-----------------------------	--	------------------------



5 NM Holding Pattern		VGSI and RNAV glidepath not coincident		6000	CONOG
GP 3.00° TCH 40		6.2 NM		5 NM	
CATEGORY	A	B	C	D	
LPV DA	4026-1½	342 (400-1½)		NA	
LNAV/VNAV DA	4073-1¾	389 (400-1¾)		NA	
LNAV MDA	4400-1	716 (700-1)		NA	
CIRCLING	4400-1	695 (700-1)		NA	

ELEV 3705

TDZE 3684

MIRL Rwy 3-21 and Rwy 17-35 0