

WAAS CH <b>99533</b> <b>W21A</b>	APP CRS <b>213°</b>	Rwy Idg <b>5001</b> TDZE <b>3705</b> Apt Elev <b>3705</b>
--	------------------------	---

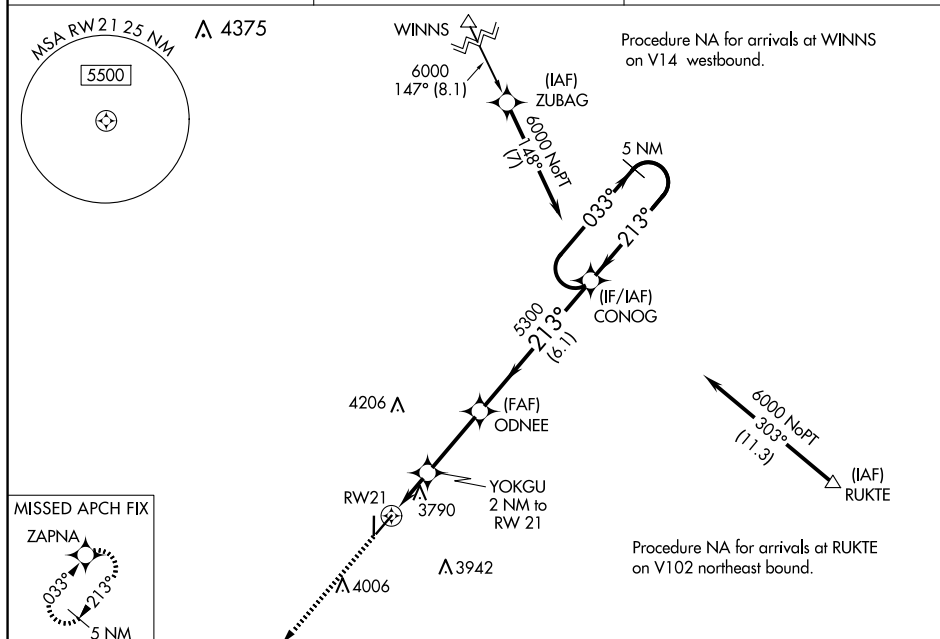
RNAV (GPS) RWY 21  
YOAKUM COUNTY (F98)

RNP APCH-GPS

**T** Baro-VNAV NA. Use Hobbs altimeter setting; when not received, use Seminole altimeter setting: increase LPV and LNAV/VNAV DA to 4088 and Cats A/B visibility to 1 3/8 mile; **A** NA increase all MDAS 60 feet. Helicopter Visibility reduction below 3/4 SM NA.

**MISSED APPROACH:** Climb to 6000 direct ZAPNA and hold.

HOB AWOS-3 <b>119.75</b>	FORT WORTH CENTER <b>132.6 269.05</b>	CTAF <b>122.9 0</b>
-----------------------------	--	------------------------



ELEV 3705	TDZE 3705
-----------	-----------

