

APP CRS
088°

Rwy Idg
TDZE
Apt Elev

3500
1069
1069

RNAV (GPS) Z RWY 9

GREENE COUNTY (WAY)

RNP APCH - GPS.

▼

NA

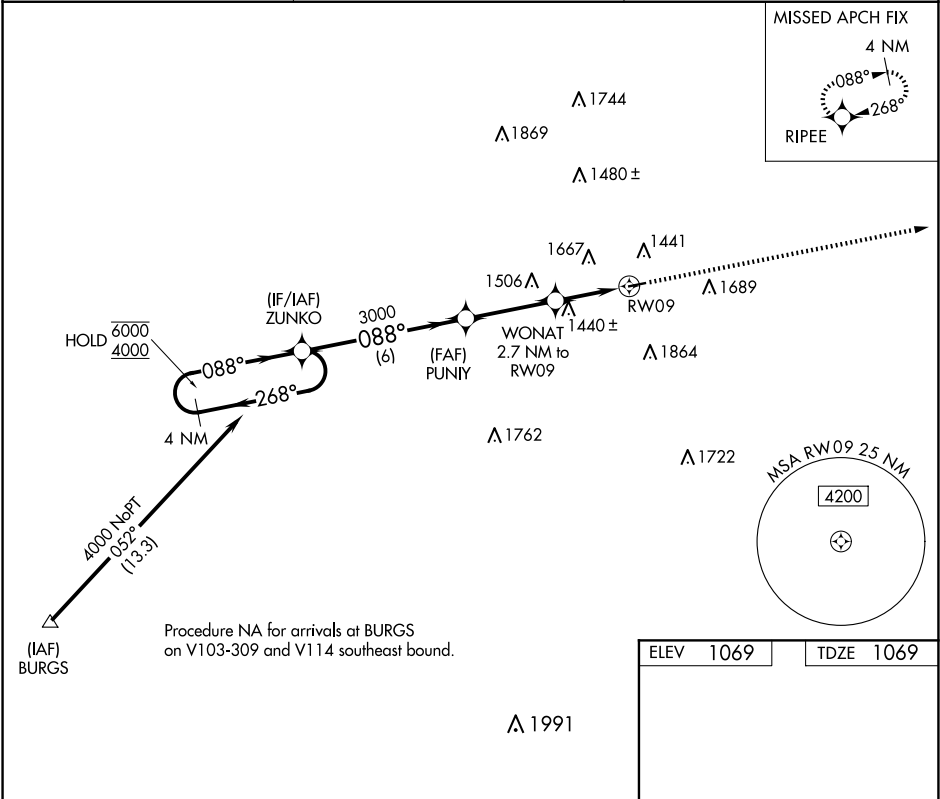
Procedure NA at night. Rwy 9 helicopter visibility reduction below 1 SM NA. Use Washington altimeter setting.

MISSED APPROACH: Climb to 4000 direct RIPEE and hold, continue climb-in-hold to 4000.

AFJ AWOS-3PT
119.175

CLARKSBURG APP CON★
121.15 284.65

UNICOM
122.8 (CTAF)



ELEV 1069

TDZE 1069

4 NM Holding Pattern

Visual Segment - Obstacles.

4000 RIPEE

088°

3500 X 75

27

CATEGORY	A	B	C	D
LNAV MDA	1760-1	691 (700-1)	1760-2 691 (700-2)	NA
CIRCLING	1880-1¼ 811 (900-1¼)	2220-1½ 1151 (1200-1½)	2280-3 1211 (1300-3)	NA

NE-4, 07 AUG 2025 to 04 SEP 2025

NE-4, 07 AUG 2025 to 04 SEP 2025