

WAAS
CH **45833**
W36A

APP CRS
003°

Rwy Idg
TDZE **884**
Apt Elev **898**

4400

884

898

RNAV (GPS) RWY 36

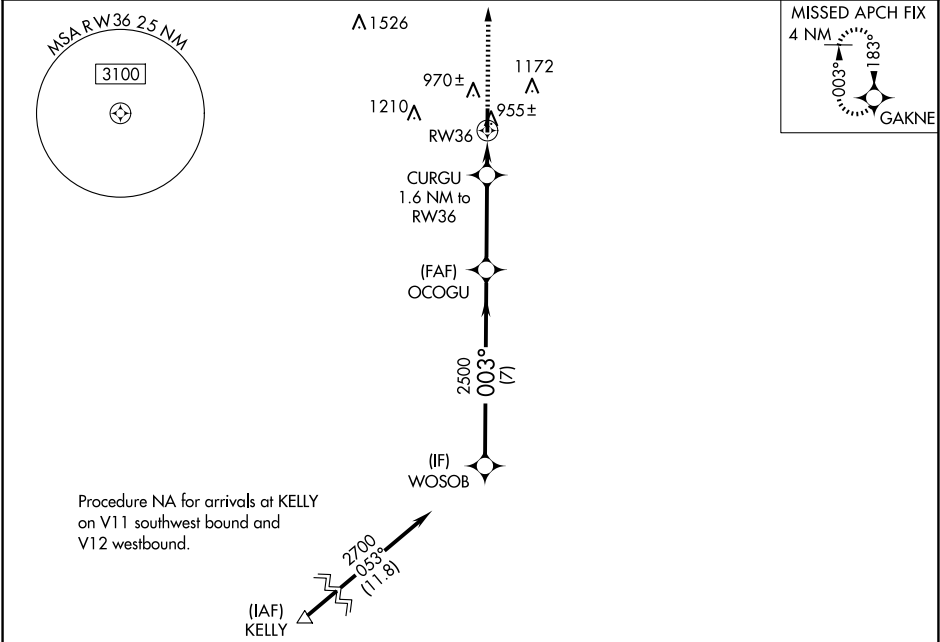
HENDRICKS COUNTY-GORDON GRAHAM FLD (2R2)

NA

Baro-VNAV NA. DME/DME RNP-0.3 NA.
Use Indianapolis Intl altimeter setting.
Helicopter visibility reduction below ¾ SM NA.

MISSED APPROACH: Climb to 2700 direct GAKNE and hold.

AWOS-3PT 118.025	IND ASOS 134.25	INDIANAPOLIS APP CON 121.1	UNICOM 122.7 (CTAF)
----------------------------	---------------------------	--------------------------------------	-------------------------------



ELEV 898

TDZE 884

2002

2700

GAKNE

* LNAV only

CURGU

1.6 NM to RW36

RW36

OCOGU

2500

003°

2500

WOSOB

2700

GP 3.00°

TCH 45

1.6

3.4 NM

7 NM

CATEGORY	A	B	C	D
LPV DA	1168-7/8 284 (300-7/8)			NA
LNAV/ VNAV DA	1168-7/8 284 (300-7/8)			NA
LNAV MDA	1240-1 356 (400-1)			NA
CIRCLING	1380-1 482 (500-1)	1560-1 662 (700-1)	1600-2 702 (800-2)	NA