

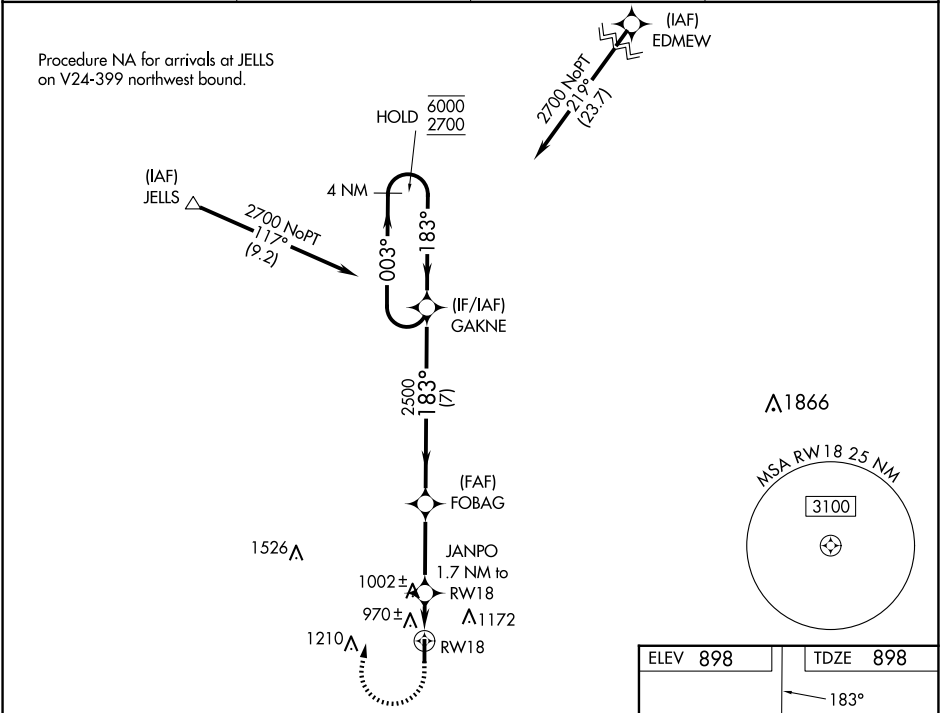
WAAS CH <b>56533</b> <b>W18A</b>	APP CRS <b>183°</b>	Rwy Idg <b>4400</b> TDZE <b>898</b> Apt Elev <b>898</b>
--	------------------------	---

RNAV (GPS) RWY 18

HENDRICKS COUNTY-GORDON GRAHAM FLD (2R:2)

RNP APCH - GPS.	MISSED APPROACH: Climb to 1420 then climbing right turn to 2700 direct GAKNE and hold.
<div><div>▼</div><div>NA</div></div> Rwy 18 helicopter visibility reduction below ¾ SM NA. Baro-VNAV NA. Use Indianapolis Intl altimeter setting.	

AWOS-3PT <b>118.025</b>	IND ASOS <b>134.25</b>	INDIANAPOLIS APP CON <b>121.1</b>	UNICOM <b>122.7 (CTAF)</b>
----------------------------	---------------------------	--------------------------------------	-------------------------------



VGSI and descent angles not coincident (VGSI Angle 3.00/TCH 44).				
4 NM Holding Pattern GAKNE				
<div>6000 ← 003° 2700 183° →</div> <div>GP 3.00° TCH 44</div> <div>2500 183°</div> <div>1420 2700 GAKNE</div> <div>JANPO 1.7 NM to RW18</div> <div>2500 1480</div> <div>7 NM 3.2 NM 1.7 NM</div>				
CATEGORY	A	B	C	D
LPV DA	1215-7/8	317 (400-7/8)		NA
LNAV/VNAV DA	1242-1	344 (400-1)		NA
LNAV MDA	1300-1	402 (500-1)	1300-1 1/8 402 (500-1 1/8)	NA
CIRCLING	1380-1 482 (500-1)	1560-1 662 (700-1)	1600-2 702 (800-2)	NA

