

APP CRS	Rwy Ldg	3050
249°	TDZE	1755
	Apt Elev	1755

RNAV (GPS) RWY 26

PHILIPPI/BARBOUR COUNTY RGNL (79D)

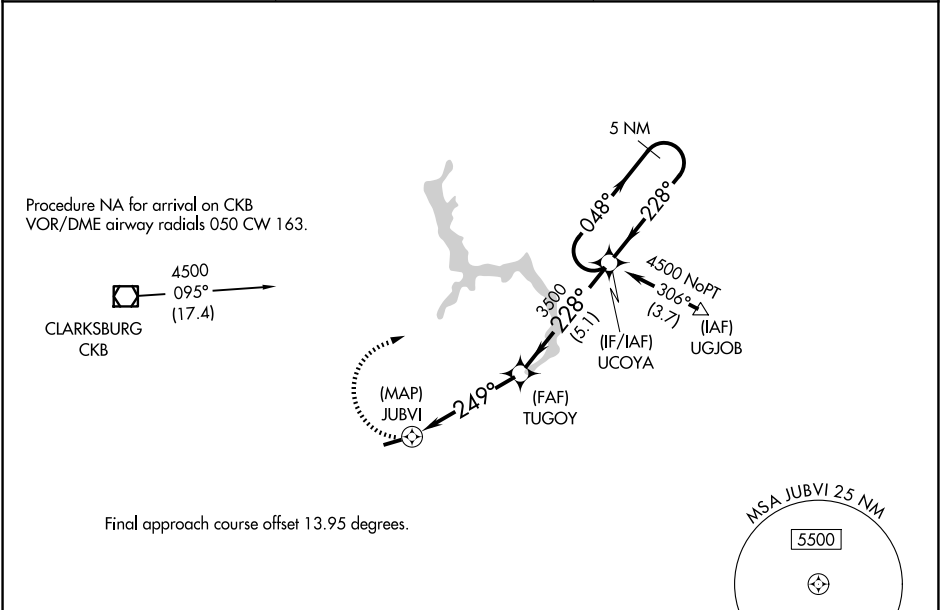
▼

NA

Rwy 26 helicopter visibility reduction below 1 SM NA.
DME/DME RNP-0.3 NA. Procedure NA at night.
Use Clarksburg altimeter setting, when not received,
use Buckhannon altimeter setting.

MISSED APPROACH: Climbing right
turn to 4500 direct UCOYA and hold.

CKB ASOS 127.825	CLARKSBURG APP CON ★ 121.15 284.65	CTAF 122.9 0
---------------------	---------------------------------------	-----------------



ELEV 1755

TDZE 1755

4500	UCOYA	VGSI and descent angles not coincident (VGSI Angle 3.00/TCH 20).	5 NM Holding Pattern	
3275 X 60	TUGOY	UCOYA	048° → 4500 ← 228°	
0.5	4.5 NM	5.1 NM		
CATEGORY	A	B	C	D
LNAV MDA	2460-1	705 (800-1)	NA	
CIRCLING	2520-1 765 (800-1)	2520-1¼ 765 (800-1¼)	NA	