

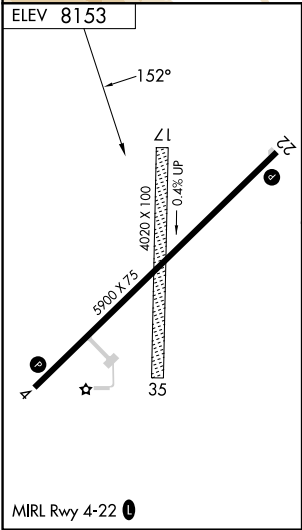
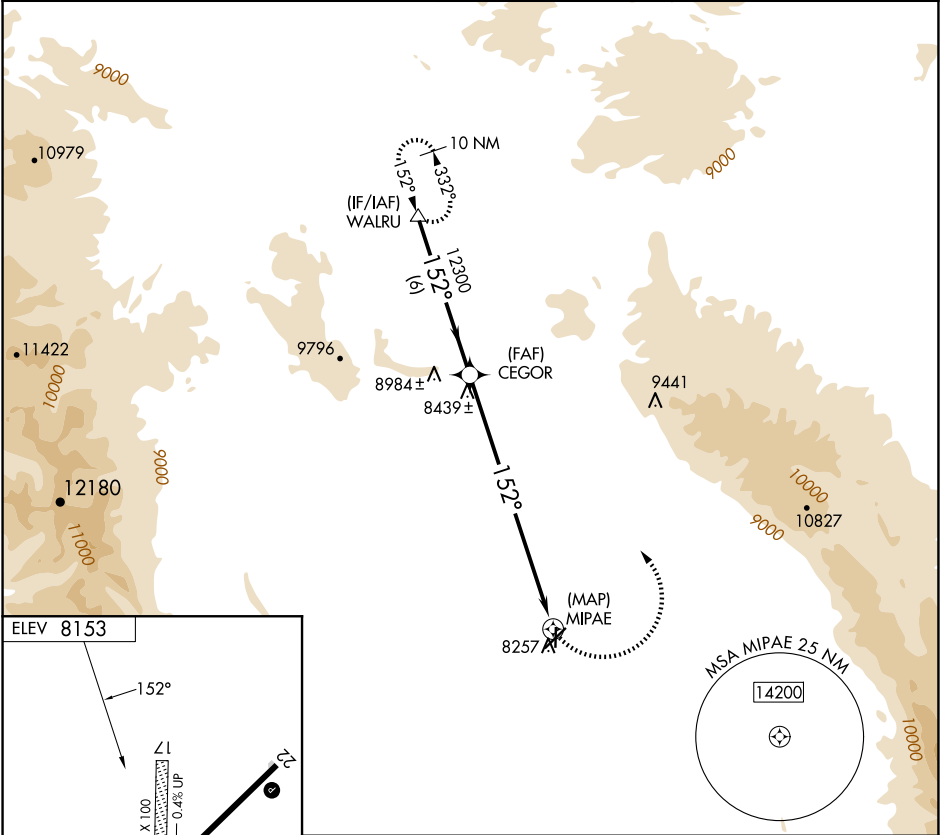
APP CRS	Rwy Ldg	N/A
152°	TDZE	N/A
	Apt Elev	8153

RNAV (GPS)-A

WALDEN-JACKSON COUNTY (33V)

<div><div>▽</div><div>▲ NA</div></div> <div>When local altimeter setting not received, procedure NA. Circling NA southeast of Rwy 4-22. Circling to Rwy 17 and 35 NA. DME/DME RNP-0.3 NA.</div>	MISSED APPROACH: Climbing left turn to 14200 direct WALRU and hold, continue climb-in-hold to 14200.
---	--

AWOS-3 118.625	DENVER CENTER 126.5 371.85	CTAF 122.9 0
-------------------	-------------------------------	-----------------



	WALRU	CEGOR	MIPAE
	14200	12300	
Procedure	Turn NA		
	6 NM	9.6 NM	
CATEGORY	A	B	C
CIRCLING	8880-1	727 (800-1)	8880-2
		727 (800-2)	NA

SW-1, 07 AUG 2025 to 04 SEP 2025

SW-1, 07 AUG 2025 to 04 SEP 2025