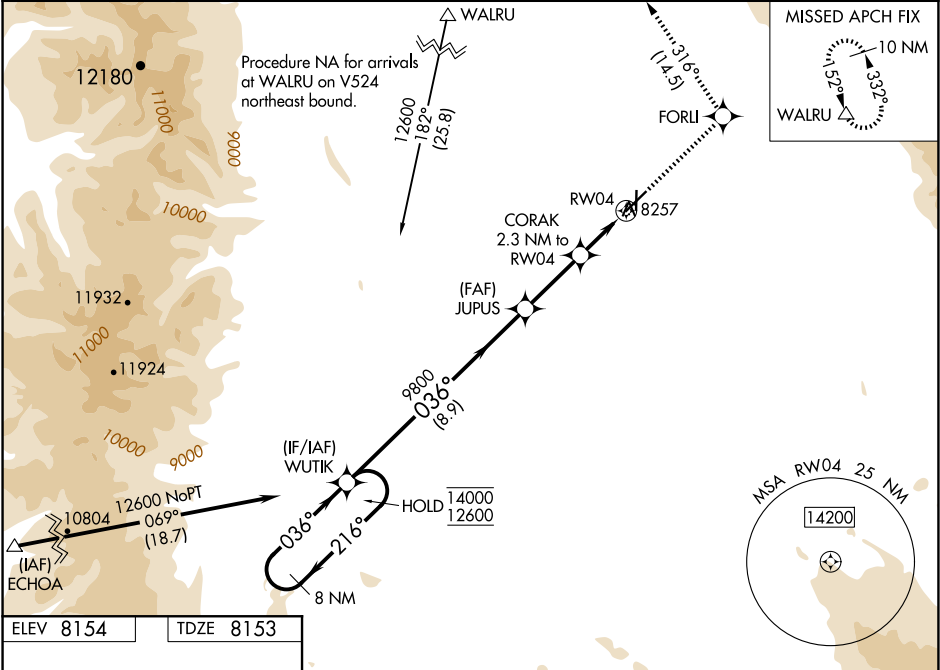


WAAS CH <b>78442</b> <b>W04A</b>	APP CRS <b>036°</b>	Rwy Ldg <b>5900</b> TDZE <b>8153</b> Apt Elev <b>8154</b>
--	------------------------	---

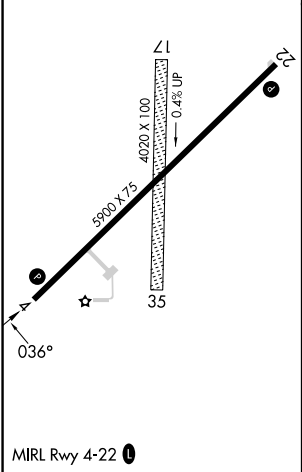
RNAV (GPS) RWY 4  
WALDEN-JACKSON COUNTY (33V)

RNP APCH. ▼ Circling NA to Rwys 17 and 35. Circling NA southeast of Rwy 4-22. Rwy 4 helicopter visibility reduction below ¾ SM NA. For uncompensated Baro-VNAV systems, LNAV/VNAV NA below -31°C or above 54°C.	MISSED APPROACH: (Do not exceed 200K until FORLI) Climb to 14200 direct FORLI and track 316° to WALRU and hold, continue climb-in-hold to 14200.
---	--

AWOS-3 <b>118.625</b>	DENVER CENTER <b>126.5 371.85</b>	CTAF <b>122.9 0</b>
--------------------------	--------------------------------------	------------------------



ELEV 8154	TDZE 8153
-----------	-----------



<div>8 NM Holding Pattern</div> <div>14000 ← 216°</div> <div>12600 → 036°</div> <div>GP 3.00° TCH 35</div>				<div>WUTIK</div> <div>JUPUS</div> <div>9800</div> <div>036°</div> <div>9800</div> <div>*8920</div> <div>8.9 NM</div> <div>2.8 NM</div> <div>1.3 NM</div> <div>1 NM</div>		<div>14200 ↑</div> <div>FORLI</div> <div>tr 316°</div> <div>WALRU</div> <div>CORAK</div> <div>2.3 NM to RW04</div> <div>*1 NM to RW04</div> <div>RW04</div> <div>*LNAV only</div>	
CATEGORY	A	B	C	D			
LPV DA	8403-1 250 (300-1)			NA			
LNAV/VNAV DA	8407-1 254 (300-1)			NA			
LNAV MDA	8520-1 367 (400-1)			NA			
CIRCLING	8520-1 366 (400-1)	8620-1 466 (500-1)	8820-1¾ 666 (700-1¾)	NA			

SW-1, 07 AUG 2025 to 04 SEP 2025

SW-1, 07 AUG 2025 to 04 SEP 2025