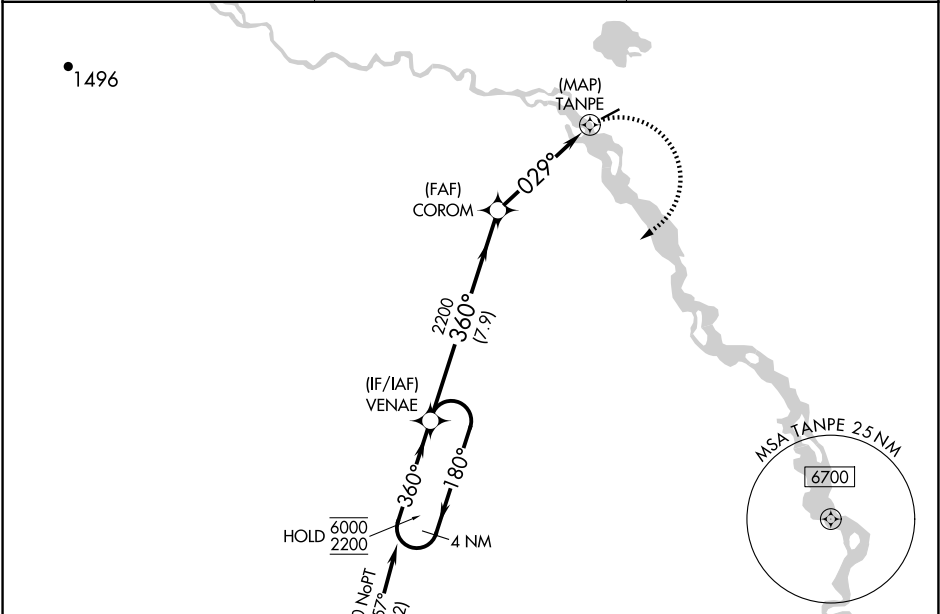


APP CRS	Rwy Idg	4000
029°	TDZE	572
	Apt Elev	574

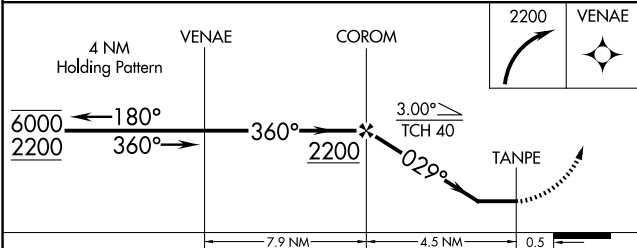
RNAV (GPS) RWY 4  
VENETIE (VEE) (PAVE)

RNP APCH-GPS.		MISSED APPROACH: Climbing right turn to 2200, direct VENAE and hold.
▼ ▲ NA	Rwy 4 helicopter visibility reduction below 1 SM NA. Use Fort Yukon altimeter setting. Procedure NA at night.	

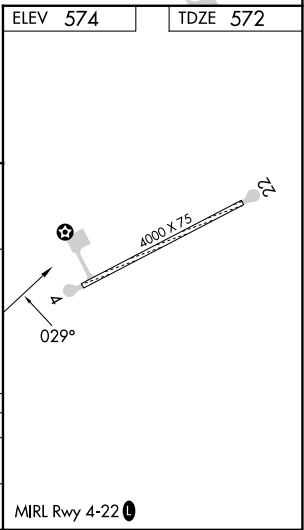
FYU/PFYU AWOS-3P 125.8	ANCHORAGE CENTER 135.0 225.4	CTAF 122.9 0
---------------------------	---------------------------------	-----------------



Procedure NA for arrivals at CURUP on airways  
B4 westbound and T273 southbound.



CATEGORY	A	B	C	D
LNAV MDA	1220-1	648 (700-1)	1220-1 $\frac{7}{8}$	648 (700-1 $\frac{7}{8}$ )
CIRCLING	1220-1	646 (700-1)	1220-1 $\frac{7}{8}$ 646 (700-1 $\frac{7}{8}$ )	1260-2 $\frac{1}{4}$ 686 (700-2 $\frac{1}{4}$ )



AK, 07 AUG 2025 to 02 OCT 2025

AK, 07 AUG 2025 to 02 OCT 2025