

APP CRS	Rwy Idg	4000
244°	TDZE	574
	Apt Elev	574

RNAV (GPS) RWY 22

VENETIE (VEE) (PAVE)


RNP APCH-GPS.

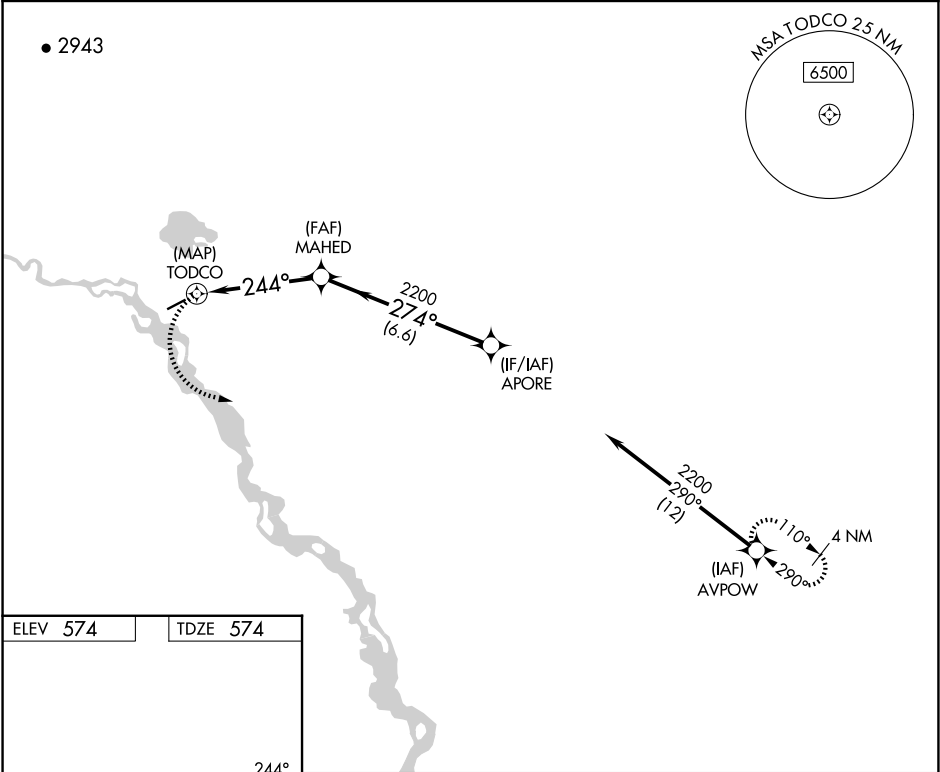
▼

▲ NA

Rwy 22 helicopter visibility reduction below 1 SM NA.
Use Fort Yukon altimeter setting. Procedure NA at night.


MISSED APPROACH: Climbing left turn to 2200, direct AVPOW and hold.




FYU/PFYU AWOS-3P	ANCHORAGE CENTER	CTAF
125.8	135.0 225.4	122.9 



ELEV 574

TDZE 574

MIRL Rwy 4-22 

	2200	AVPOW	MAHED	APORE
				
	0.5	4.5 NM	6.6 NM	
CATEGORY	A	B	C	D
LNAV MDA	1160-1	586 (600-1)	1160-1¾	586 (600-1¾)
 CIRCLING	1180-1	606 (700-1)	1180-1¾	1260-2¼
			606 (700-1¾)	686 (700-2¼)