

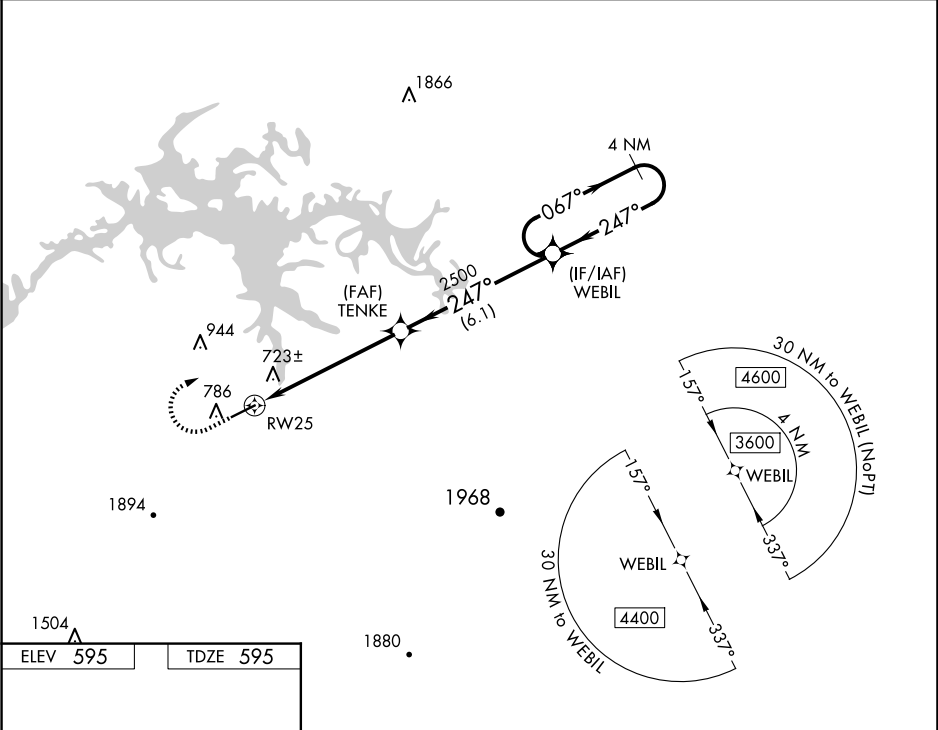
▼

▲ NA

Baro-VNAV NA. DME/DME RNP-0.3 NA. Use Gadsden altimeter setting, when not received, use Anniston altimeter setting and increase all DA/MDA 20 feet.

MISSED APPROACH: Climb to 1500 then climbing right turn to 3600 direct WEBIL and hold.

GAD AWOS-3PT 127.825	ATLANTA CENTER 124.5 270.325	CTAF 122.90
-------------------------	---------------------------------	----------------



ELEV 595

TDZE 595

1500

3600

WEBIL

247°

5500 X 100

25

TENKE 2500

RW25

2500

5.9 NM

6.1 NM

WEBIL

4 NM Holding Pattern

067° 3600

247°

GP 3.00°

TCH 40

CATEGORY	A	B	C	D
LPV DA	856-7 <sup>8</sup> / <sub>8</sub> 261 (300-7 <sup>8</sup> / <sub>8</sub> )			
LNAV/VNAV DA	1064-1 <sup>5</sup> / <sub>8</sub> 469 (500-1 <sup>5</sup> / <sub>8</sub> )			
LNAV MDA	1180-1 585 (600-1)		1180-1 <sup>3</sup> / <sub>4</sub> 585 (600-1 <sup>3</sup> / <sub>4</sub> )	
CIRCLING	1180-1 585 (600-1)		1360-2 <sup>1</sup> / <sub>4</sub> 765 (800-2 <sup>1</sup> / <sub>4</sub> )	2260-3 1665 (1700-3)

MIRL Rwy 7-250