

WAAS CH <b>58238</b> <b>W01A</b>	APP CRS <b>354°</b>	Rwy Idg <b>8100</b> TDZE <b>7637</b> Apt Elev <b>7664</b>
--	------------------------	---

RNAV (GPS) RWY 1

STEVENS FLD (PSO)

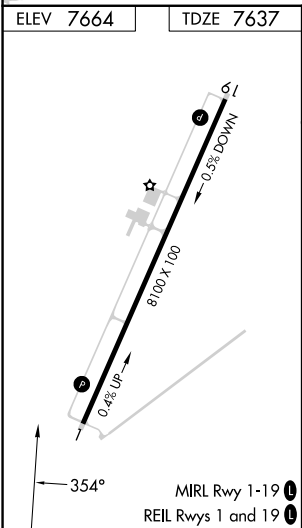
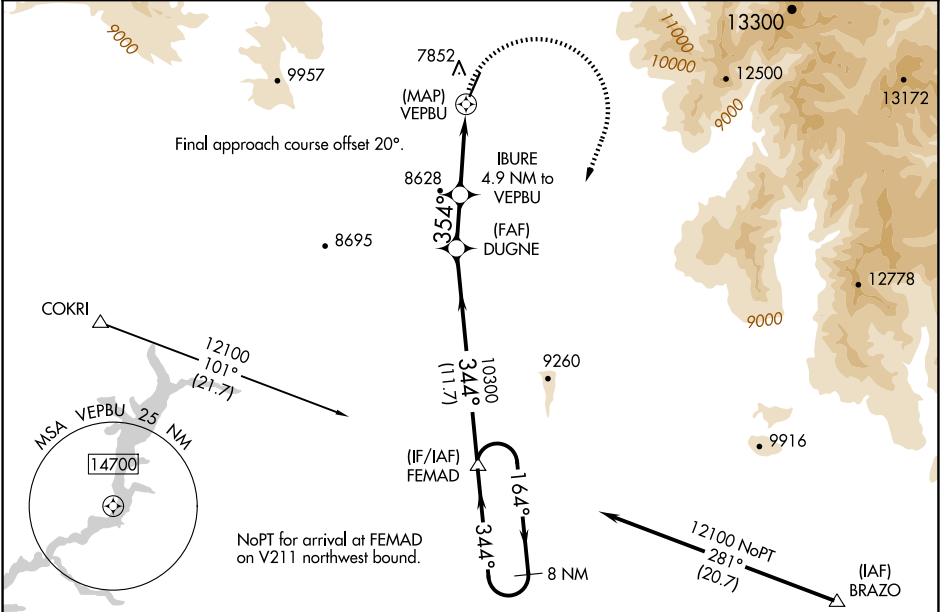
⚠

⚠

Circling to Rwy 19 NA at night. DME/DME RNP-0.3 NA. Helicopter visibility reduction below ¾ SM NA. When local altimeter setting not received, use Durango altimeter setting and increase all MDA 220 feet and LP and LNAV visibility Cat B ¼ mile and Cat C ¾ mile, and Circling Cats A/B ¼ mile.

MISSED APPROACH: Climbing right turn to 12100 direct FEMAD and hold.

AWOS-3PT <b>127.175</b>	DENVER CENTER <b>118.575 348.7</b>	UNICOM <b>122.7 (CTAF) 0</b>
----------------------------	---------------------------------------	---------------------------------



8 NM Holding Pattern		FEMAD	12100	FEMAD
12100		164°	344°	344°
		DUGNE	IBURE 4.9 NM to VEPBU	1.3 NM to VEPBU
		10300	354°	3.00° TCH 40
		9380		
		11.7 NM	2.9 NM	3.6 NM
CATEGORY	A	B	C	D
LP MDA	8240-1	603 (600-1)	8240-1¾ 603 (600-1¾)	NA
LNAV MDA	8280-1	643 (700-1)	8280-1⅞ 643 (700-1⅞)	NA
CIRCLING	8420-1 756 (800-1)	8480-1¼ 816 (900-1¼)	8940-3 1276 (1300-3)	NA