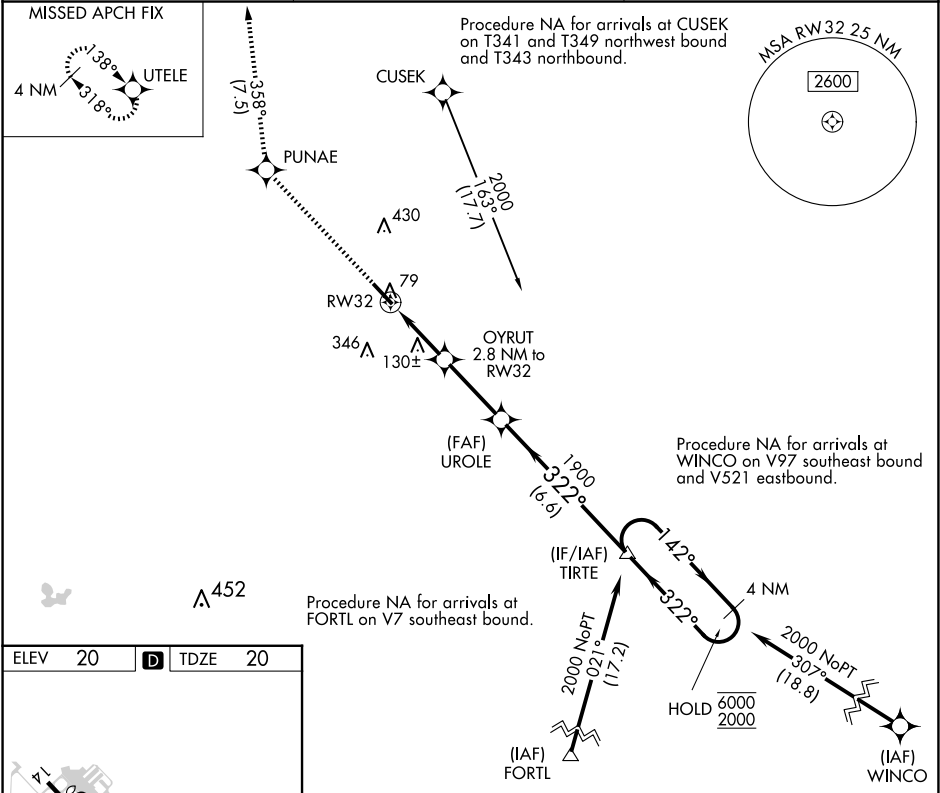


APP CRS	Rwy Idg	5125
322°	TDZE	20
	Apt Elev	20

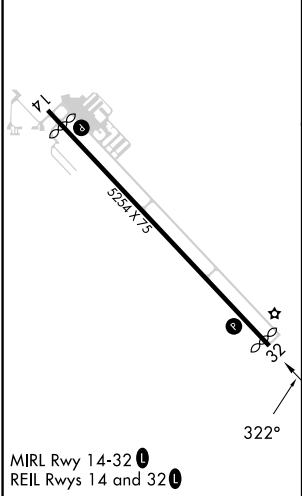
RNAV (GPS) RWY 32
LA BELLE MUNI (X14)

RNP APCH - GPS.	MISSED APPROACH: Climb to 2000 direct PUNAE and on track 358° to UTELE and hold.
NA Rwy 32 helicopter visibility reduction below ¾ SM NA. Use RSW altimeter setting.	

RSW ASOS 124.65	FORT MYERS APP CON ★ 126.8	UNICOM 122.8 (CTAF) 0
--------------------	-------------------------------	--------------------------



ELEV 20	TDZE 20
---------	---------



2000	PUNAE	tr 358°	UTELE	4 NM Holding Pattern
	OYRUT 2.8 NM to RW32	UROLE	TIRTE	142° → 6000 ← 322° 2000
RW32	960	1900		
	2.8 NM	3 NM	6.6 NM	
CATEGORY	A	B	C	D
LNAV MDA	480-1	460 (500-1)	480-1 3/8	460 (500-1 3/8)
CIRCLING	580-1	560 (600-1)	800-2 1/4 780 (800-2 1/4)	800-2 1/2 780 (800-2 1/2)