

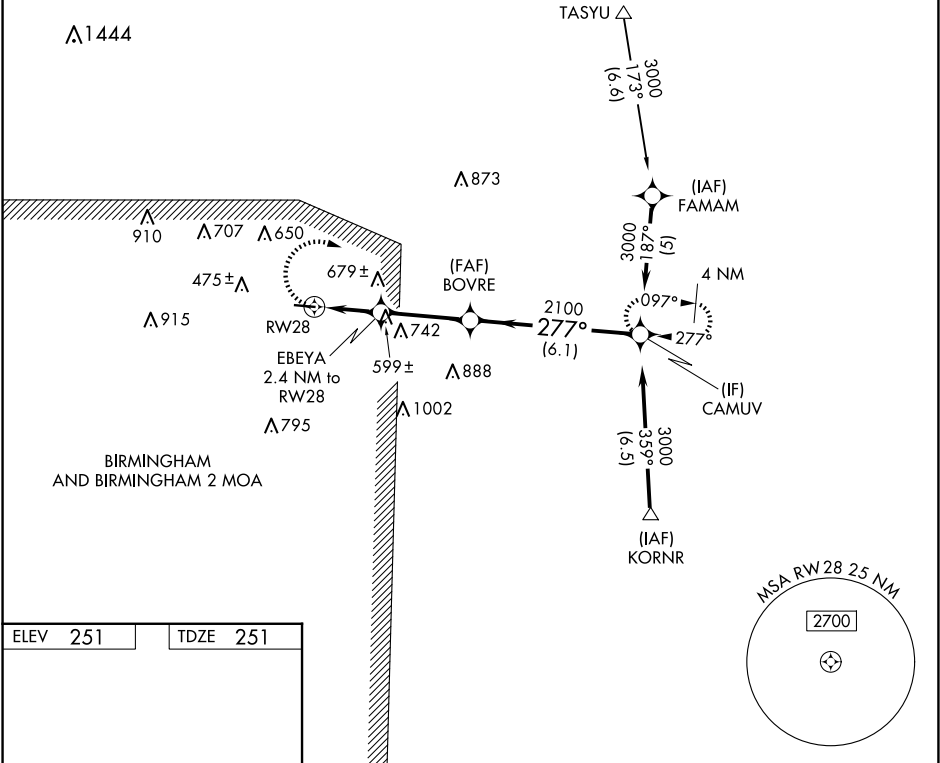
RNP APCH-GPS.

T Procedure NA at night. Rwy 28 helicopter visibility reduction below ¾ SM NA.

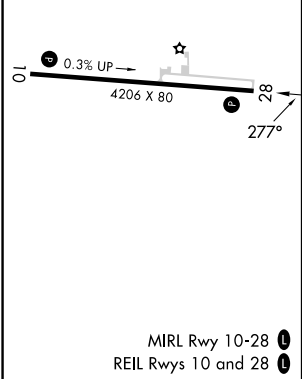
NA Use Tuscaloosa altimeter setting; when not received, use Alabaster altimeter setting: increase all MDAs 20 feet and visibility LNAV Cat C ¼ SM and Circling Cat B/C ¼ SM.

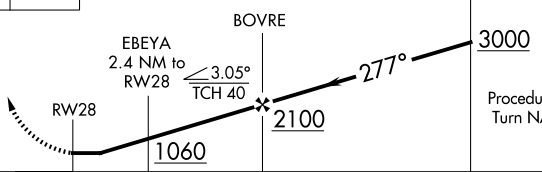
MISSED APPROACH:
Climbing right turn to 3000 direct CAMUV and hold.

TCL ASOS 132.825	ATLANTA CENTER 132.25 263.025	UNICOM 122.975 (CTAF) 0
---------------------	----------------------------------	----------------------------



ELEV 251	TDZE 251
----------	----------



3000	CAMUV	VGSI and descent angles not coincident (VGSI Angle 4.00/TCH 40).			
					
CATEGORY	A	B	C	D	
LNAV MDA	920-1	669 (700-1)	920-1 ³ / ₄ 669 (700-1 ³ / ₄)	NA	
CIRCLING	1020-1 769 (800-1)	1060-1 809 (900-1)	1120-2 ¹ / ₂ 869 (900-2 ¹ / ₂)	NA	