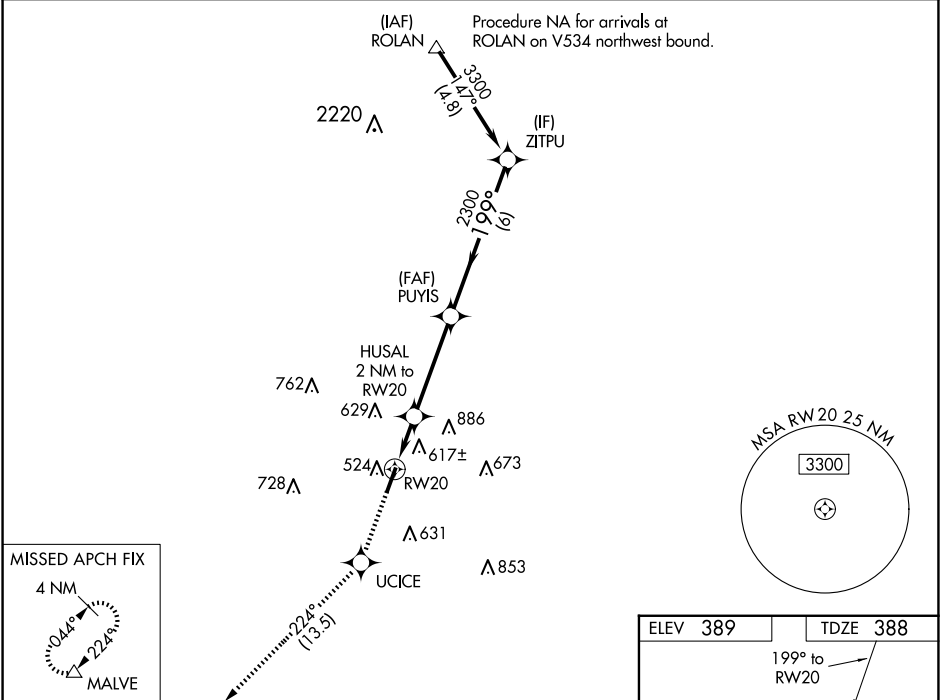


|  |                        |   |
|--|------------------------|---|
| WAAS<br>CH <b>40309</b><br><b>W20A</b> | APP CRS<br><b>199°</b> | Rwy Idg<br>TDZE <b>388</b><br>Apt Elev <b>389</b> |
|--|------------------------|---|

RNAV (GPS) RWY 20

SALINE COUNTY RGNL (SUZ)

|   |   |   |
|---|---|---|
| RNP APCH - GPS.   |   | MISSED APPROACH: Climb to 2000 direct UCICE and track 224° to MALVE and hold. |
| Rwy 20 helicopter visibility reduction below ¾ SM NA.<br>For uncompensated Baro-VNAV systems, LNAV/VNAV NA below -15°C or above 54°C. |   |   |
| AWOS-3<br><b>132.125</b>  | LITTLE ROCK APP CON<br><b>119.5 306.2</b> | UNICOM<br><b>122.8 (CTAF) 0</b>   |



|              |                      |                       |   |
|--------------|----------------------|-----------------------|---|
| 2000         | UCICE                | 224° tr               | MALVE   |
|              |                      |                       |   |
|              |                      |                       |   |
| CATEGORY     | A                    | B                     | D   |
| LPV DA       |                      | 639-¾                 | 251 (300-¾)                                     |
| LNAV/VNAV DA |                      | 789-1⅛                | 401 (400-1⅛)                                    |
| LNAV MDA     | 880-1                | 492 (500-1)           | 880-1⅜ 492 (500-1⅜)                             |
| CIRCLING     | 940-1<br>551 (600-1) | 1080-1<br>691 (700-1) | 1200-2½<br>811 (900-2½) 1200-2¾<br>811 (900-2¾) |

