

WAAS CH 58209 W02A	APP CRS 019°	Rwy Idg TDZE 389 Apt Elev 389
--	------------------------	---

RNAV (GPS) RWY 2

SALINE COUNTY RGNL (SUZ)

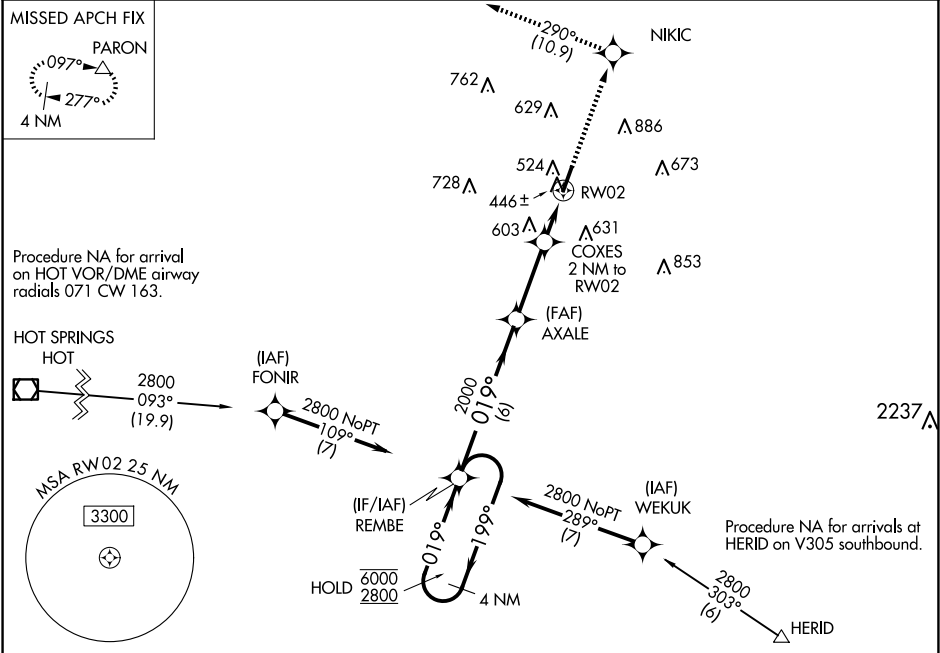
RNP APCH - GPS.

▼ Rwy 2 helicopter visibility reduction below ¾ SM NA.

▲ For uncompensated Baro-VNAV systems, LNAV/VNAV NA below -15°C or above 54°C.

MISSED APPROACH: Climb to 2600 direct NIKIC and track 290° to PARON and hold.

AWOS-3 132.125	LITTLE ROCK APP CON 119.5 306.2	UNICOM 122.8 (CTAF) 0
--------------------------	---	---------------------------------



ELEV 389 TDZE 389

019° to RW02
REIL Rwy 2 and 20
MIRL Rwy 2-20

VGSI and RNAV glidepath not coincident (VGSI Angle 3.00/TCH 56).

4 NM Holding Pattern REMBE

2600 NIKIC 290° tr PARON

6000 2800 199° 019° 019° 2000 1060 1.2 NM to RW02

GP 3.00° TCH 45

6 NM 3 NM 0.8 1.2 NM

CATEGORY	A	B	C	D
LPV DA	639-¾ 250 (300-¾)			
LNAV/VNAV DA	670-⅞ 281 (300-⅞)			
LNAV MDA	820-1 431 (500-1)		820-1¼ 431 (500-1¼)	
CIRCLING	940-1 551 (600-1)	1080-1 691 (700-1)	1200-2½ 811 (900-2½)	1200-2¾ 811 (900-2¾)