



WAAS CH 82225 W31A	APP CRS 298°	Rwy Ldg 3701 TDZE 60 Apt Elev 62
--	------------------------	---

RNAV (GPS) RWY 31
TATITLEK (7KA) (PAKA)

	Use Valdez altimeter setting. Circling NA northeast of Rwy 31-13. DME/DME RNP-0.3 NA. Helicopter visibility reduction below 1 SM NA.
 NA	Procedure NA at night.

MISSED APPROACH: Climbing left turn to 4400 direct VALUC and on track 205° to BLIGH and on track 132° to JOH VOR/DME and hold.

ANCHORAGE CENTER 119.3	JUNEAU RADIO 122.2	CTAF 122.7
----------------------------------	------------------------------	----------------------

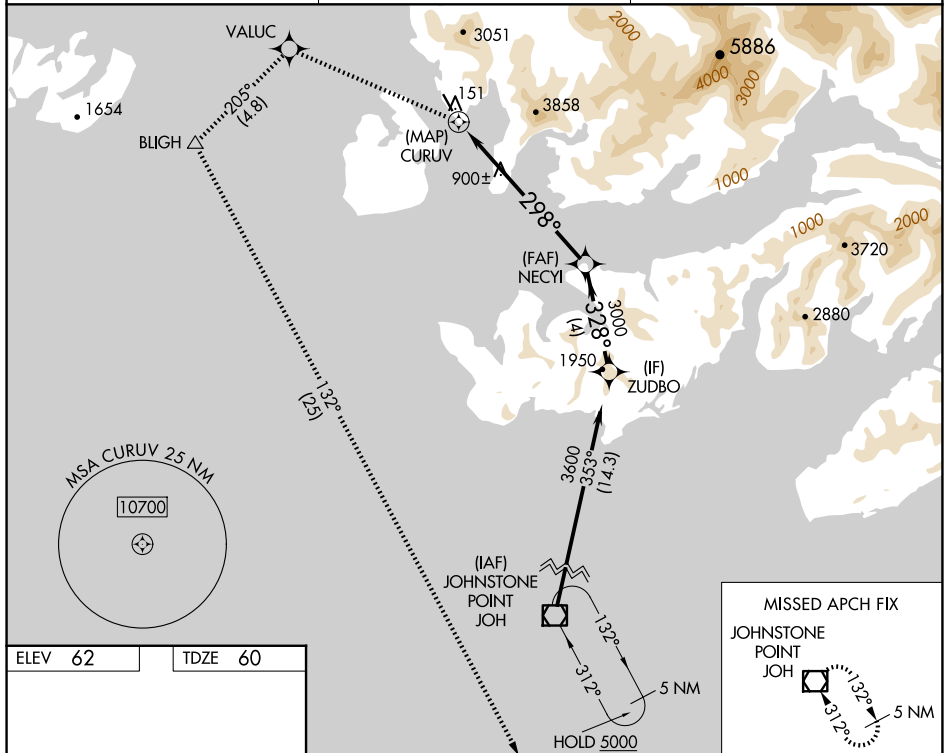


Diagram illustrating a flight path and associated data:

- Flight Path:** A series of waypoints connected by a line, showing a turn. Key waypoints include 4400, VALUC, BUGH, JOH, NECYI, CURUV, and ZUDBO. Distances and angles are marked: 3701 X 7.5, 0.6 NM UP, 0.5 NM, 6.8 NM, 4 NM, 298°, 328°, 3000, 3600, 3.77°, TCH 40.
- Arrival/Departure Table:**

CATEGORY	A	B	C	D
LP MDA	1260-1¼ 1200 (1200-1¼)	1260-1½ 1200 (1200-1½)	NA	
LNAV MDA	1400-1¼ 1340 (1400-1¼)	1400-1½ 1340 (1400-1½)	NA	
CIRCLING	1400-1¼ 1338 (1400-1¼)	1400-1½ 1338 (1400-1½)	NA	
- Additional Information:**
 - WATER RWY: 13W-31W 8000 X 4000
 - MIRL Rwy 13-31