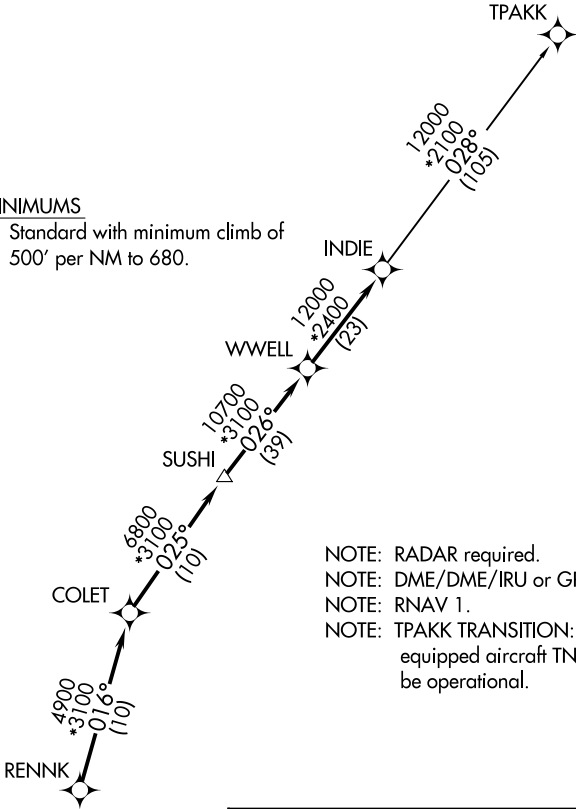


ATIS  
119.525  
CLNC DEL  
132.075  
GND CON  
132.075  
EXECUTIVE TOWER★  
126.975 (CTAF)  
HOUSTON DEP CON  
123.8 257.7

TOP ALTITUDE:  
ASSIGNED BY ATC

TAKEOFF MINIMUMS  
Rwy 18, 36: Standard with minimum climb of  
500' per NM to 680.



- NOTE: RADAR required.  
NOTE: DME/DME/IRU or GPS required.  
NOTE: RNAV 1.  
NOTE: TPAKK TRANSITION: For non GPS  
equipped aircraft TNV DME must  
be operational.

DEPARTURE ROUTE DESCRIPTION

TAKEOFF RUNWAY 18: Climb on heading 175° to  
680 for RADAR vectors to RENNK, thence . . .  
TAKEOFF RUNWAY 36: Climb on heading 355° to  
680 for RADAR vectors to RENNK, thence . . .

. . . on track 016° to COLET, then on track 025°  
to SUSHI, then on track 026° to WWELL, then on  
track 026° to INDIE, then on (transition).  
Maintain ATC assigned altitude. Expect filed  
altitude 10 minutes after departure.

TPAKK TRANSITION (INDIE8.TPAKK)

NOTE: Chart not to scale.

SC-5, 07 AUG 2025 to 04 SEP 2025

SC-5, 07 AUG 2025 to 04 SEP 2025