

WAAS CH 48814 W09A	APP CRS 091°	Rwy Idg 3401 TDZE 244 Apt Elev 244
--	------------------------	---

RNAV (GPS) RWY 9

CHUATHBALUK (9A3) (PACH)

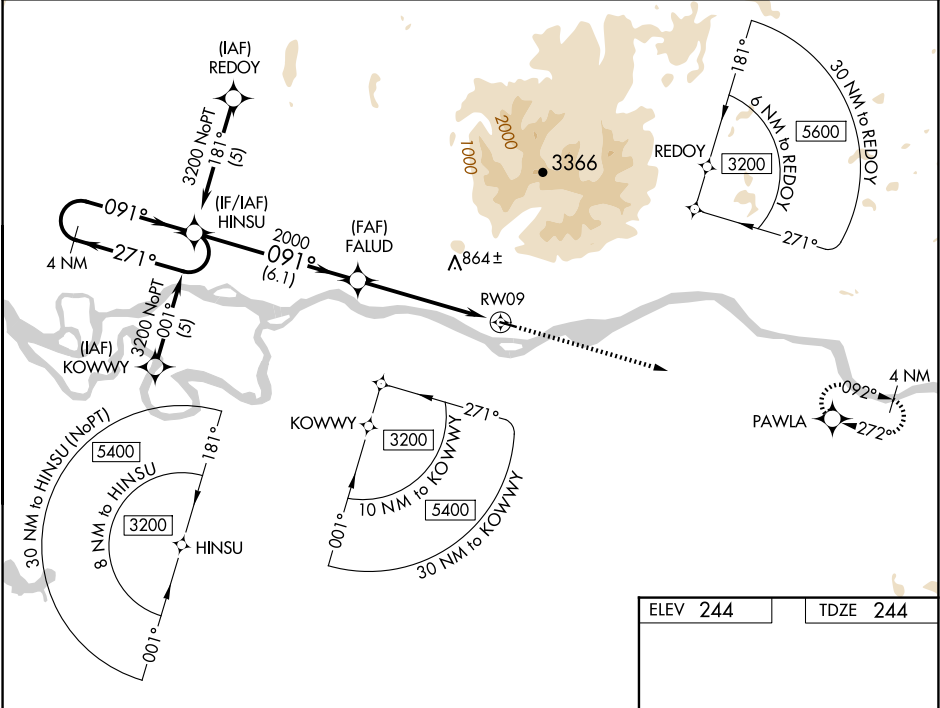
NA

-31°C

Circling NA north of Rwy 9-27. DME/DME RNP- 0.3 NA. Visibility reduction by helicopters NA. Use Aniak altimeter setting; when not received, use Kalskag altimeter setting and increase all DA 58 feet and MDA 60 feet and increase LPV all Cats visibility ¼ mile, and increase LNAV and circling Cat C visibility ¼ mile.

MISSED APPROACH: Climb to 3400 direct PAWLA and hold.

ANCHORAGE CENTER 118.15 251.05	CTAF 122.9 0
--	------------------------



4 NM Holding Pattern

HINSU

3200

271°

091°

GP 3.00°

TCH 40

VGSI and RNAV glidepath not coincident (VGSI Angle 3.00/TCH 26).

3400

PAWLA

↑

✱

091°

2000

FALUD

6.1 NM

5.3 NM

RW09

CATEGORY	A	B	C	D
LPV DA	652-1½ 408 (500-1½)			NA
LNAV MDA	1000-1 756 (800-1)	1000-1¼ 756 (800-1¼)	1000-2¼ 756 (800-2¼)	NA
CIRCLING	1000-1 756 (800-1)	1000-1¼ 756 (800-1¼)	1000-2¼ 756 (800-2¼)	NA

MIRL Rwy 9-27 0

REIL Rws 9 and 27 0

AK, 07 AUG 2025 to 02 OCT 2025

AK, 07 AUG 2025 to 02 OCT 2025